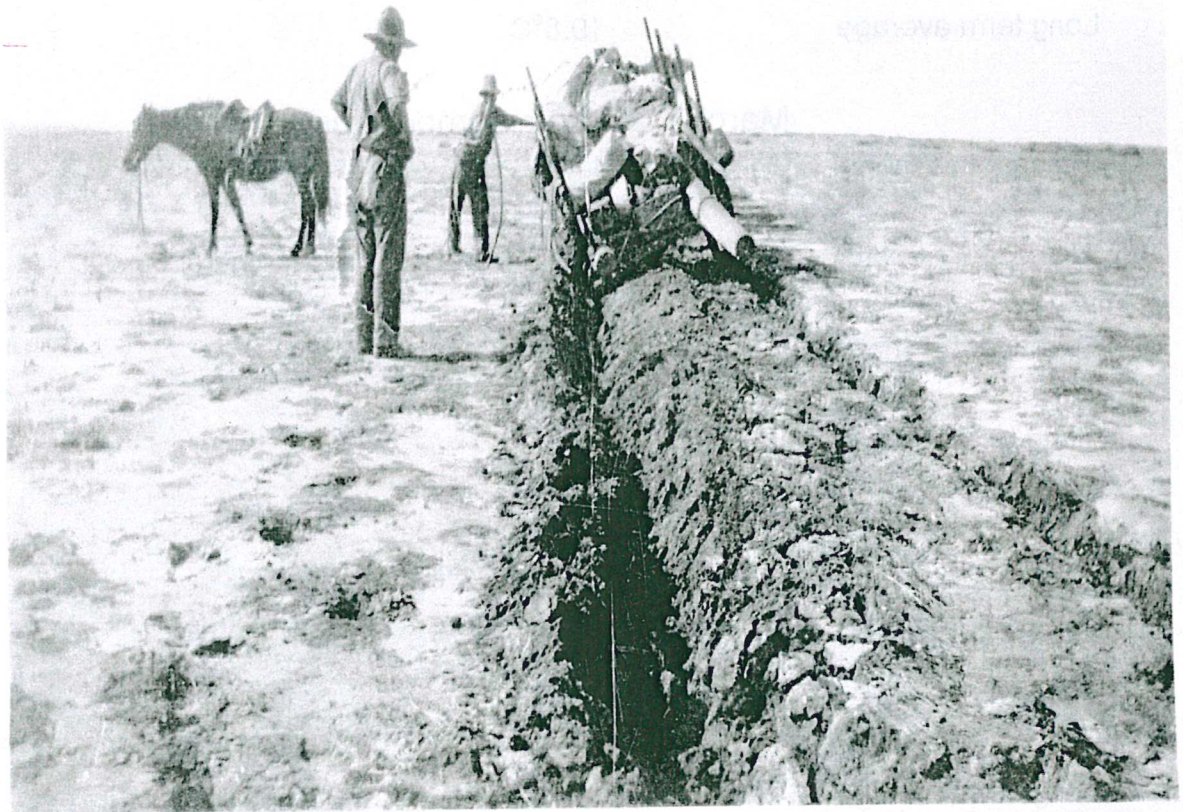


APRIL 2017 NEWSLETTER

The Wiluna Wire



Wiluna Shire photo ref#:00043

From the collection of:

Salur

EVERYONE IS WELCOME!

Hello and welcome to the April edition of the **Wiluna Wire**. In this edition we have submissions from a number of Wiluna agencies and individuals. We would love to make the **Wiluna Wire** into an informative, interesting and entertaining newsletter, that includes submissions from all sections and ages of the Wiluna community. The newsletter will only be as good as the submissions we receive!

If you have any feedback, suggestions and or submissions, please come into the Wiluna Shire and have a chat. Contact can also be made by phone— 9981 8000 or email admin@wiluna.wa.gov.au

Wiluna Weather Almanac

March Minimum Temperature

Lowest this month	15.5°C	30th March 2017
Lowest on record	9.4°C	28th March 1958
Average this month	20.3°C	+ 0.5°C
Long term average	19.8°C	

March Maximum Temperature

Highest this month	41.0°C	4th March 2017
Highest on record	44.0°C	1st March 1985
Average this month	34.9°C	+0.8°C
Long term average	34.1°C	

March Rainfall

Wettest this month	53.8mm	25th March 2017
Total this month	146.0mm	5 day(s)
Long term average	37.6mm	4.6 day(s)
Wettest on record	234.9mm	1934
Driest on record	0.0mm	1902

ANZAC DAY



**DAWN SERVICE IN WILUNA
MEMORIAL GARDEN
SHIRE OF WILUNA ADMIN OFFICE
TUESDAY 25TH APRIL 2017
COMMENCING AT 5.30AM**

**Followed by bbq breakfast at the Shire Sport &
Recreation Centre**

Everyone welcome



Ngangganawili Aboriginal Health Services

ICN 1870

ABN 85 650 098 620

44 Scotia Street, Wiluna WA 6646
PO Box 40, Wiluna WA 6646
Telephone (08) 9981 8600
Fax: (08) 9981 8660
info@nahs.org.au
www.nahs.org.au

NAHS Visiting Specialist **April 2017**

DOCTOR

Toby	11 th – 8 th May 2017
Alan	9 th – 22 nd May 2017
Rachel	28 th March – 10 th April 2017
Medical Student	26 th April – 24 th May 2017

RFDS DENTIST

3rd – 7th April 2017

ENT VISIT

4th April 2017

PODIATRIST & DIETICIAN

10th April 2017

NEXT MONTH—MAY

- ♦ RFDS Dentist
- ♦ Gynecologist
- ♦ Respiratory Team
- ♦ Podiatrist & Dietician

Water Corporation

Goldfields and Agricultural Region

How you can contact us...

The Water Corporation is the principal supplier of water services in Western Australia. Our purpose is to provide sustainable management of water services to make Western Australia a great place to live.

If you live in Wiluna you are served by the Corporation's Goldfields and Agricultural Region. The regional office is located in Northam and we have district offices and depots around the region, including Kalgoorlie and Merredin.



If you notice a leak or a burst water main, or have a query about your account, give the Water Corporation a call on the following numbers:

Faults & Emergencies and Security **13 13 75**
(24 hours)

General and Account Enquiries **13 13 85**
(8am-5pm weekdays)

Building Services and Subdivision Enquiries **13 13 95**
(8am-5pm weekdays)

Waterwise Helpline **13 10 39**
(24 hours)

Hearing or speech impaired customers

Please call the National Relay Service and ask for 13 13 85 (account enquiries) or 13 13 75 (faults, emergencies and security).

Translation and interpreter services **13 14 50**

Please call the Translation and Interpreter Service and ask for 13 13 85 (account enquiries) or 13 13 75 (faults, emergencies and security).

You can also visit our website : www.watercorporation.com.au

Or Email customer@watercorporation.com.au



Management Team Assistant

Blackham Resources, an ASX listed mining and exploration company (ASX: BLK), has recently commenced mining and processing operations at the Matilda Gold Mine. The company owns a 1.3 mtpa processing plant plus all the necessary infrastructure to develop the mine at minimal cost. The Plant feed will be from a variety of open pit and underground ore sources. JORC Resources of 44 mt at 3.3 g/t for 4.7M oz of gold will allow the company to extend the current 7-year mine. This is an exciting opportunity for experienced candidates to develop a new gold mine in Western Australia..

Reporting to the Administration / HR Superintendent, you will support the GM and his site management team with PA and Administrative activities within the Matilda Project.

The key responsibilities of this role will include:

- Preparing various forms of correspondence including letters, briefing papers and reports.
- Managing travel arrangements including flights, accommodation and hire vehicles for staff, consultants and/contractors.
- Assist with the preparation and presentation of weekly and monthly reports, briefing papers and other documents.
- In conjunction with Corporate Office, manage monthly Payroll variance data, analysis of catering and flight costs and submit cost accrual data.
- Assist with the on-boarding of new staff to the team and departmental record keeping and recording.
- Deputise for the Admin/HR Superintendent during absence, support and coach other team members.

Essential skills and experience:

- 3-5 years PA or other suitable admin / management experience
- Demonstrate strong interpersonal, time-management and communication skills, the ability to work under pressure in a fast-paced environment and have strong attention to detail
- An ability to interact proactively with management and staff at all levels of the organisation in the resolution of issues
- Ability to contribute towards the development and implementation of programs and initiatives to meet the needs of the organisation
- Cert IV in Administration or similar
- The right to work in Australia.

Preference will be given to residents of Wiluna. Unsolicited applications from agencies will NOT be accepted.

Applications close 15th April '17



You may or may not have noticed that there has been an increasing amount of activity up at our Galaxy Pit, which is approximately 7km north along, and 1km west of the Wiluna North Road/Canning Stock Route.

In recent months, we have conducted detailed drilling, haul road development and clearing activities, and this week we have recently added mining equipment to the site.

Mining activities, including drilling and blasting, will commence in the coming week, and ore haulage activities will commence in late March or early April.

Blasting activities will be in the afternoon towards the end of daylight hours, typically at 4.30pm—5.00pm. A blasting risk management process has been developed for the area which includes physical guards and the development of a perimeter bund around the entire pit area. Nevertheless, blasting may be heard back in Wiluna township from time to time.

Facilities at the pit will include offices, water pumping and maintenance facilities. Mining activities will be on a 24 hour, 7 days a week basis. We will have a presence at the Galaxy Pit at most times (22-23 hours per day.)

Ore haulage will be along approximately 5km of the North Road before diverting around the north and east of Wiluna via a dedicated haul road. Ore haulage will be carried out by on-highway road trains (triple trailers) during 6am-6pm, and will cross the Wongawol Road/Gunbarrel Highway approximately 2km out of Wiluna. Typically, only one road train will be required for ore haulage, occasionally a second will be called into action. It is not our intention to haul on night shift and any move to do so or extend haulage hours will be signalled ahead of time. We will establish appropriate signage at this intersection and along the Wiluna North Road over the coming month before ore haulage commences.

Mining of the Galaxy Pit is scheduled to continue until December 2017 or January 2018, and ore haulage will likely continue until March 2018.

We have intentionally not advertised our presence at the Galaxy Pit to date but this is obviously about to change with higher frequency of traffic and signage.





www.buildyourwa.com.au

THE NATIONALS
for Regional WA

Hon Dave Grills MLC Member for the Mining and Pastoral Region

March 20, 2017

Media Statement

With the final votes being counted from the State election, it appears that I have been unsuccessful in my bid to retain my Mining and Pastoral Region seat.

It has been an honour and a privilege to represent communities in the electorate and serve as their voice in State Parliament.

Among the many things for which I am grateful, enjoying the friendship and support from so many folk is at the top. I am humbled and proud to have served you to the best of my ability. Thank you to my beautiful girls, Sue and Arddun, my wonderful family, steadfast friends and loyal constituents for your support over the last four years. You may never know how influential and important you have been.

I would like to thank every member of my brilliant staff and my colleagues who have worked alongside me and assisted me during my term in State Parliament.

Looking back at the last four years, I believe we have achieved a great deal together in the electorate. From the beginning, I took my direction from constituents and sought to fight for their interests in government. I am proud to have been part of a team that has delivered record investment to communities in the Goldfields-Esperance, Kimberley, Pilbara, Mid West and Gascoyne regions.

Our flagship Royalties for Regions program has helped rebuild regional communities neglected by previous metro-centric governments. Real progress has been made in narrowing the gap between the city and the regions in terms of infrastructure and service provision.

From Wyndham to Esperance, communities across the vast Mining and Pastoral Region have shared in the nearly \$7 billion invested through Royalties for Regions. Thanks to this strong regional development focus, there is now a sense of optimism in the regions that didn't exist a decade ago.

This was always going to be a tough election, especially with a multi-million dollar scare campaign waged against the Nationals WA by the big miners. Irrespective of the outcome, this election has raised serious questions about the influence of multinational corporations and vested interests in WA's political process.

I am disappointed that I will not be able to complete all the projects and legislative reforms I have been working on. I also feel some trepidation about the future of regional WA.

According to its Financial Management Plan released a day before the election, the incoming Labor government will slash \$2.3 billion from Royalties for Regions over the next three years. This will hurt our regional communities.

One door has closed and I look forward to the opening of the next. I hope to serve regional WA in a different capacity. As I am fond of saying, change is a constant, development is optional.

We still have much to do and my Esperance office will be operational until May 22. I will continue to work on local issues in the electorate up until this date. Please do not hesitate to contact myself or the team as required.

Thank you.



Blues for the Bush Update

After an incredible 2016 event, The Shire of Perenjori and Bush Heritage Australia advise that 2017 will be used to build further community engagement and develop a business plan to best support the ongoing success of our unique rural event - Blues for the Bush. Both organisations are committed to an event in 2018 and propose the 22nd to 24th September 2018 as the weekend of the next Blues for the Bush.

The not-for-profit event is a celebration of community, culture and conservation and has been successfully staged in 2013, 2014 and 2016 at Charles Darwin Reserve, Perenjori.

According to the Shire of Perenjori President Mr Laurie Butler, the event has grown considerably and to ensure it can continue to entertain visitors and locals, it is important to use this year to review and reflect, using past learnings to plan for the future.

CEO of Bush Heritage Australia, Mr Gerard O'Neil also highlights that, "The Shire of Perenjori and Bush Heritage Australia remain committed to this event as a valuable opportunity to bring together people from near and far and showcase the natural landscape, conservation activity and hospitality of our region.

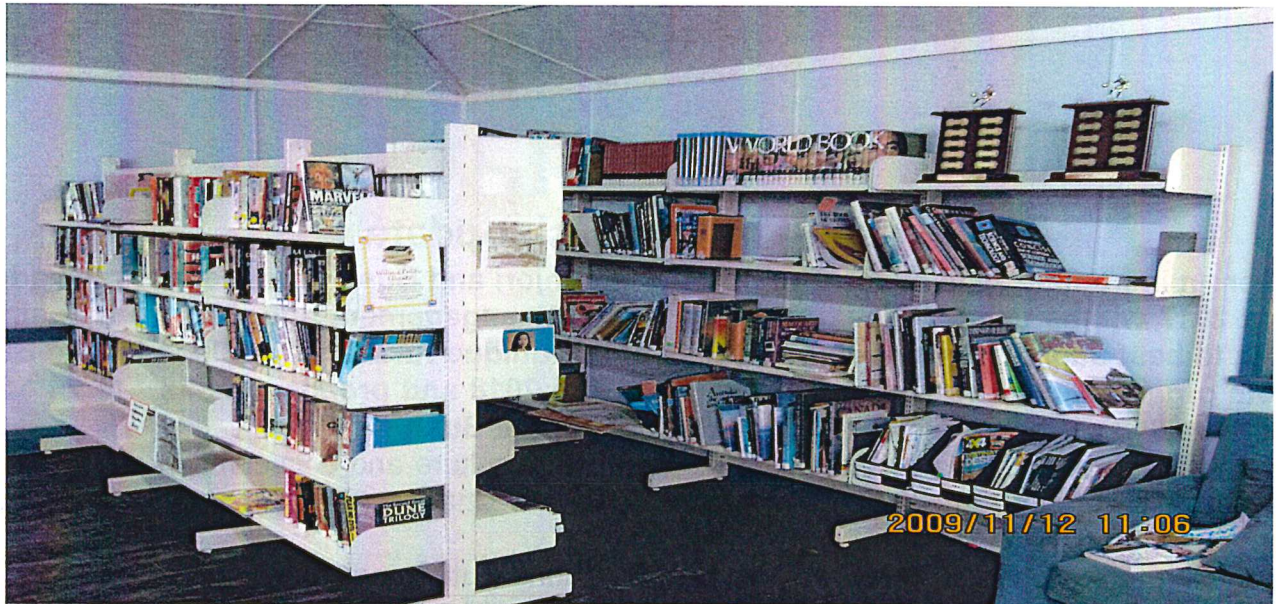
We strongly value the relationships we have built with Shire of Perenjori and our key Sponsors in delivering the event over the past three years and look forward to continuing with these partnerships to stage the most successful and dynamic program for the event in 2018".

During 2017, the Shire of Perenjori in partnership with Blues for the Bush plans to deliver a series of Community Arts Projects that will complement the Blues for the Bush ethos of celebrating community, culture and conservation. These projects will use a number of different artistic and creative mediums to encourage local people to try their hand at new skills and connect with their community. If you are part of a local community group or organisation and have some ideas on the type of projects you would like to see delivered in the lead up to the 2018 Blues for the Bush please contact Christina Laue at the Shire of Perenjori via email cdo@perenjori.wa.gov.au or call 08 9973 0100.

For more information please sign up to our mailing list at www.bluesforthebush.org.au or visit us on Facebook www.facebook.com/bluesforthebush

LIBRARY CLOSED

Due to renovations the Shire of Wiluna has temporarily closed the Wiluna Library. We apologise for any inconvenience caused and we will keep you updated on a re-opening date.



TJUKURBA GALLERY

Please note the Tjukurba Gallery is temporarily closed.
Due to the on-going renovations the Tjukurba Gallery was temporarily re-located to one of the Shire houses but due to unforeseen circumstances this is now closed also. We hope to have the brand new gallery up and running soon.
In the meantime, if you wish to purchase some art you can visit the gallery website on www.tjukurbagallery.com.au



Drive safe this Easter

WA Road Fatalities - Year to Date Comparisons

Year	Metropolitan WA	Regional WA
As at 10 April in:		
2017	19	26
2016	17	38
2015	23	23
2014	22	25
2013	22	20
2012	28	18
2011	22	21
2010	22	14

Don't become a Statistic



THE WILUNA CHRONICLE AND EAST MURCHISON ADVOCATE

1924



The first local newspaper was delivered in Wiluna on Saturday, June 4th, 1924. At last, the residents were to read more of the news of Wiluna.

Tom O'Shaughnessy was appointed local agent for the receiving of advertisements and sale of the paper. He also received news paragraphs, and accounts of meetings, socials etc.

A local correspondent was sought from persons willing to accept the position at a slight remuneration for their services.

The first Wiluna advertisement was for Tom O'Shaughnessy's Club Hotel, which promised First Class accommodation, purest liquors, and civility and attention.

Next week it was reported that Jack Massman, an old prospector, many years resident, fell and broke his leg, and was in hospital.

A very enjoyable dance was held in Lucanus's dining room in aid of local Hospital funds, several ladies took a turn at the piano; and Master Jack Strauss operated the gramophone.

There was agitation for a mail service from Meekatharra to Wiluna. A new motor car service had commenced between the two towns. The Postmaster, Meekatharra, had recommended to the Department that service was warranted.

Mining was in the doldrums in Wiluna, a diamond drilling programme had commenced, but no change was reported as the lode was still some hundreds of feet ahead of the drill.

In December it was reported that the motor truck service run by Brown and Green Motors, between Meekatharra and Wiluna was very busy. There were three trips made in one week, and the truck was heavily laden each time.

At the end of 1924, the population of Wiluna had declined until there was then only about 100 men and 30 women, which included the few new men working on the big mine. The town consisted of a post office, police station, three hotels, a general store, a hairdressers and tobacconist shop, a newsagency, a cordial factory, and one or two other businesses.

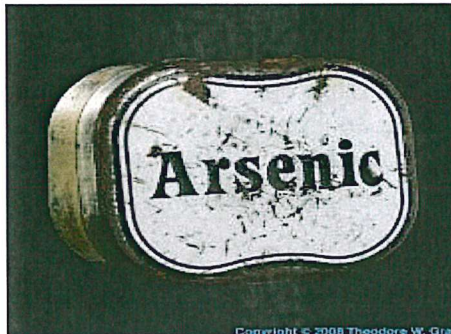
Ten inches of rain fell in March, the claypans and lakes were overflowing after the best rains for 25 years—the great flood of 1900. Pastoralists were jubilant were looking forward to a splendid season.

All motor traffic was suspended on account of flooded creeks and boggy roads. Supplies of butter, potatoes and onions were in very short supply.

A man named William Kelly was drowned while endeavouring to cross West Creek. He and Thomas Dayley had started out for Yandil. Dayley got over the ford, but missed Kelly, who had evidently slipped under the swollen water in the creek. A search party went out on the Wednesday, and on Thursday, with the aid of a boat, the body was recovered some thirty metres from where Kelly had stepped in.

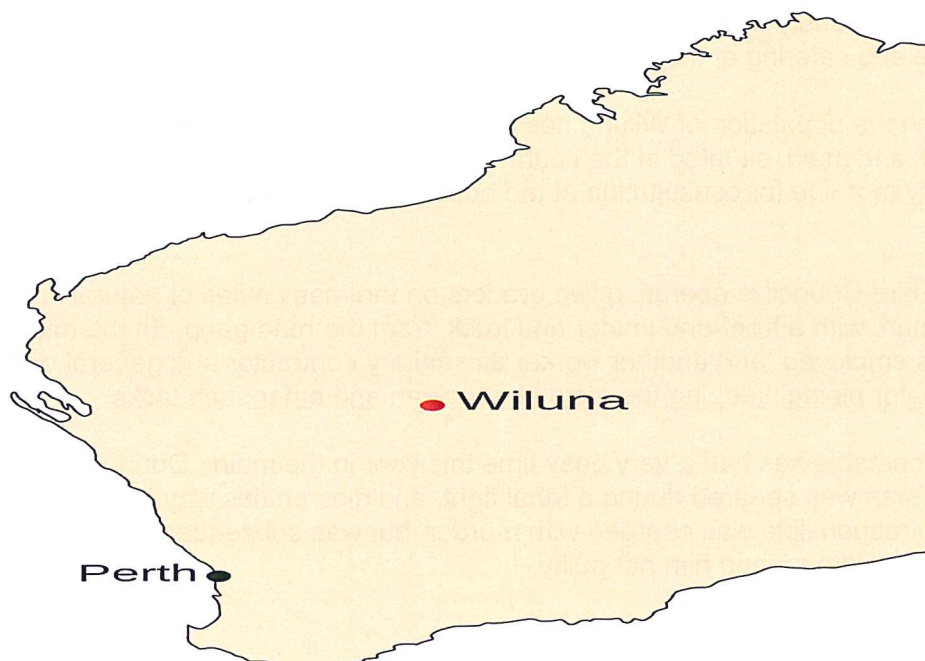
Shortage of food was so serious that Malcolm Johnston discarded his motor truck and travelled by horse and cart to Nannine, along the old track, to replenish supplies.

A PIECE OF WILUNA HISTORY



The outbreak of war in 1939 brought many changes to Wiluna. The mine workers either joined forces or were manpowered. A good percentage of those who joined up were attached to the 6th Division. Miners and engine drives were not accepted as they were needed to keep the mines in production, producing gold that was needed to purchase overseas commodities. The manufacture of arsenic was of great importance.

Wiluna was the only place in Australia where arsenic was produced. If this supply failed, the arsenic had to be imported from Sweden. The arsenic was bought by A. Victor Leggs of Melbourne and was used in the munition factories to harden lead and steel. It was because of the quantity of arsenic that Wiluna was producing that Tokyo Rose broadcast that Wiluna was Japan's No. 1 target. The men, however were displeased at not being able to fight for their country, and in protest, just kept the wheels of industry turning. As the production level grew less and less, the arsenic plant was forced to close down.



WILUNA IN 1963

The town of Wiluna in 1963 presented a vastly different picture. On entering the town from any direction, one is struck by the tragic sight of concrete slabs, once the floors of houses; or of a few shrubs, struggling for an existence in this dry area. There are few houses left which are inhabited. One can drive down the length of most streets, passing only one or two houses in the half-mile drive. The centre of the present townsite is bare, save for a few concrete slabs, and some heaps of rubble, but the town can still boast a bitumen main street. Since the road was paved in the early 1930's it has not had any repairs made to its surface, and it is still in first class order for its entire length of three miles connecting the town to the site of the Wiluna Gold Mine. The main street, Wotton Street, is flanked by a garage, transport depot, (housed in the old Weeloona Hotel), three shops, a police station, post office and hotel.

Mining on a commercial scale has been abandoned, but two of the towns old identities, Harry Maund and Jack (Moulder) Jones, are still treating ore at the site of the Wiluna Gold Mine. When the mine closed in 1947, a good deal of useable ore was left in cyanide tanks and concrete pits. For those two men it is well worth while to extract the metal.

Wiluna is gradually slowing down because of its lack of communication with the "outside" world. Mail days have been cut to a minimum. A year ago there were two planes per week, one land mail via Meekatharra and one via Leonora. Planes arrive on Sundays and Thursdays, bringing papers, mail, incidental freight and passengers. Later, the Thursday's plane was stopped, and a flight on Monday replaced the Sunday plane. In September of this year the Monday flight was replaced by one on Thursday again, no papers were brought by this flight. Papers are brought by mail truck from Meekatharra, making some of them up to a week old by the time they reach Wiluna.

Social life is not lacking. For the young people a badminton club was organised by Constable Williams and his wife in August of this year. A few weeks earlier, a dancing instructor was available in the town, and some of the senior pupils at the school, along with other young people from the locality, were able to learn the basic steps in dancing. Dances are now held every Friday evening in the Club room at the Club Hotel. A picture committee is responsible for the weekly picture show held in the Moonlight Hall every Saturday night. A very important occasion each year is the Wiluna Gymkhana and Race Day. This year it was decided to hold each meeting on a separate day. The children's Christmas party was financed this year, at a cost of over \$200, by the Wiluna Race Committee.

The C.W.A. is quite active in the town. Meetings are held monthly in the association's own rooms. The ladies have purchased smaller rooms where station people can stay over night and can clean up after the very dusty drive in from the station. Funds are raised by renting one shop for a nominal fee and catering at the annual races and fetes.

Even though the population of Wiluna has diminished there is a small hospital, staffed by a matron, nurse, cook and maid, situated in the south-east corner of the town. The flying doctor visits Wiluna every Friday morning for consultation at the hospital, and the plane is sent for any emergency cases.

The local Shire Council is operating two graders on the many miles of natural surface roads, while two other men, with a front-end loader and truck, from the road gang. In the town itself, a full-time secretary is employed, and another worker as sanitary contractor and general odd-job man, repairing water piping, keeping the main street clean and other such tasks.

The local constable has had a very easy time this year in the main. During the last week of October, a man was speared during a tribal fight, and dies on this way to Meekatharra Hospital. The person responsible was charged with murder, but was subsequently released after the court session in Geraldton found him not guilty.

WILUNA IN 1981

There have been many changes in the town and district. The Seventh Day Adventist Mission closed as such in 1974, the buildings lay derelict until 1975 when the Ngangganawili Community was formed and in late 1977, a move commenced, fostered by the Department of Aboriginal Affairs and funded by Department of Housing and Construction, to establish a village project on the mission site.

After a few years of negotiations, Mr Jack Parr of Golden Mile Orchards in Queensland obtained in 1970 a lease to establish a citrus and cash crops orchard near the old Agriculture Research Station site. Known as "Desert Farm", it quickly flourished and was soon the producer of vast quantities of all manner of melons, vegetables and truly enormous citrus fruits.

1976 saw the establishment in the same vicinity of an emu farming project by Commonwealth Government company, Applied Ecology Pty Ltd. The object was to raise emus on an intensive farming basis to produce, in the first instance, skins for the manufacture of garments as has been proved with ostrich skins and in the second case, meat to supplement the diet of the Aboriginal people. It was also envisaged that the project would provide another source of employment. However, the yield proved to be not quite the desired result and in 1981 the Federal Government withdrew funds before skins, meat or much employment could be achieved.

The District Hospital closed about 1966 and a new nursing post was established in Thompson Street. Meanwhile the old hospital lay derelict ravaged by the elements and the "souvenir hunters" until in 1980 the Wiluna Shire Council, up till then housed in the inadequate fire station in Wall Street, moved in and "stopped the rot" by converting the fine old hospital into a civic centre.

Only one hotel, the "Club" remains in business today. The "Weeloona" was demolished in 1977/78 but the beautiful old "Lake Way" still manages to withstand the ravages of time and vandals. The "Commercial" has long since disappeared.

Prospects for the Wiluna district are good; cattle prices are high, gold prices are high (but no fabulous strikes have been made) and the Lake Way Uranium finally received the seal of approval in September 1981. The Yeelirrie Uranium venture is slowly under way 90 kms away to the south and there is much prospecting activity in the Barwidgee and Lake Way areas. An intensive drilling programme is being carried out in the Gibson Desert near Mt Everard, 650kms east of Wiluna.

With the changed way of life of the majority of the town population brought about by Australia's adoption of the International Declaration of Human Rights, the police staff increased dramatically. From a staff of one in 1974, it increased first to two in 1975 to three including a Police Aide in 1977 then to four in 1978 and in 1981 an extra aide was appointed bringing the total to five, one sergeant, two constables and two aides.

The school in 1981 has a staff of six, five teachers and a clerk/gardener, all of whom are from one family. Whereas in 1963 there were three Aboriginal children at the school out of the total of twenty, there are 95 enrolled in 1981, five European and ninety Indigenous. About 25 of the total are at the pre-primary school which was erected in 1979.

Wiluna has an enormous tourist potential with its aboriginal ventures, its vast cattle stations and its starkly majestic surrounding scenery, but distance, combined with harsh road conditions, is not attractive to the faint-hearted. Road funds are meagre and distances are great: 4WD vehicles with steel reinforced tyres are the order of the day. The more intrepid tackle the Canning Stock Route from Wiluna to Halls Creek—1600km of startling desert—or the Gunbarrel Highway from Wiluna to Giles—1000kms of equally startling rocky outcrop and desert.

CAN YOU HELP ?

DO YOU RECOGNISE ANYONE IN THESE OLD PHOTOGRAPHS ?

WE ARE TRYING TO IDENTIFY THE PEOPLE IN
THESE PHOTO'S IN OUR ARCHIVES.

IF YOU RECOGNISE ANYONE PLEASE CONTACT

KATRINA AT admin@wiluna.wa.gov.au

OR TRACEY AT agm@wiluna.wa.gov.au

WE APPRECIATE YOUR HELP !



Photo 1

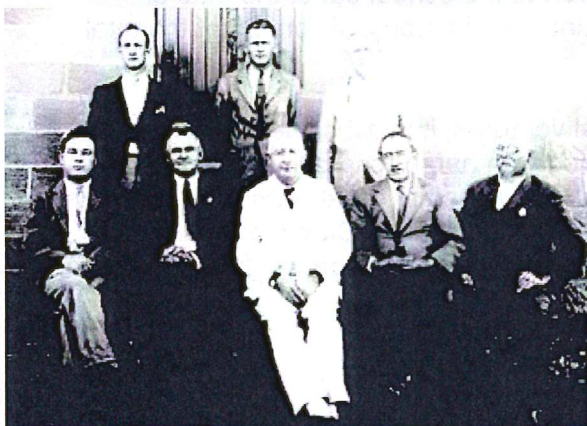


Photo 3

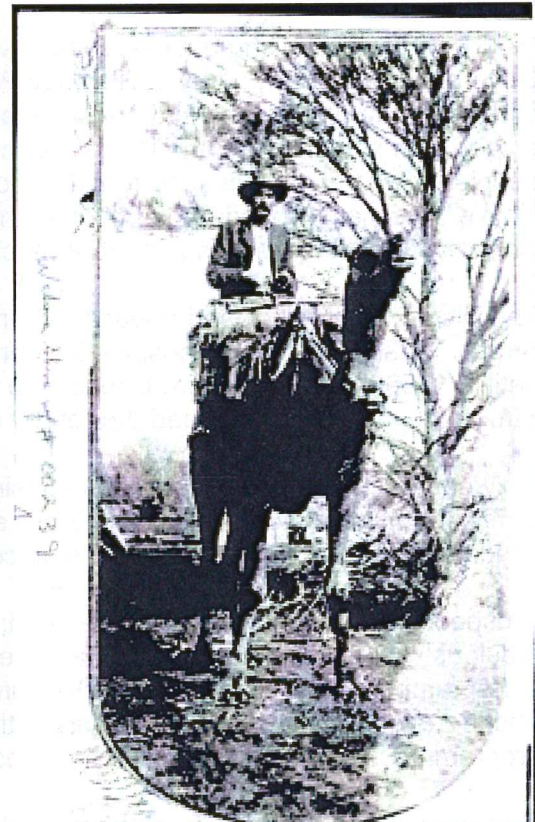


Photo 2



Photo 4

Photo 5

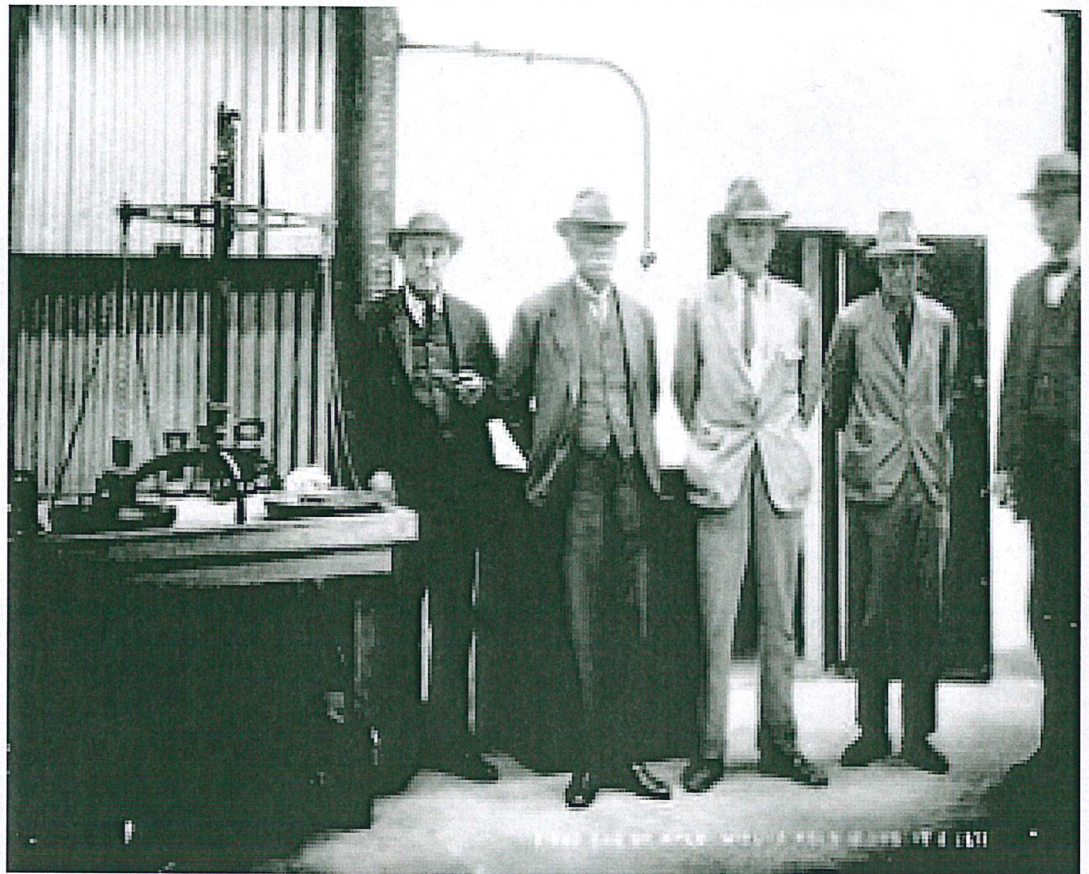


Photo 6



Photo 7



Photo 8

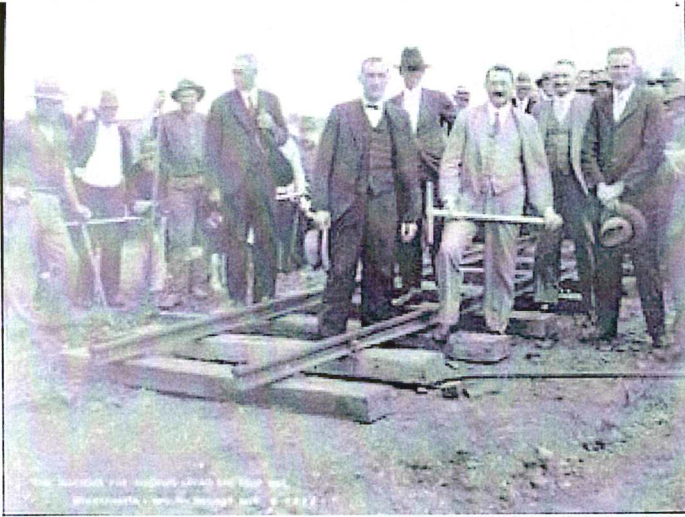


Photo 9

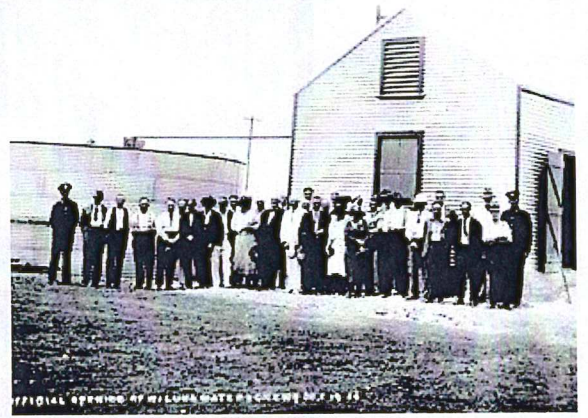


Photo 10



Photo 11

Photo 12

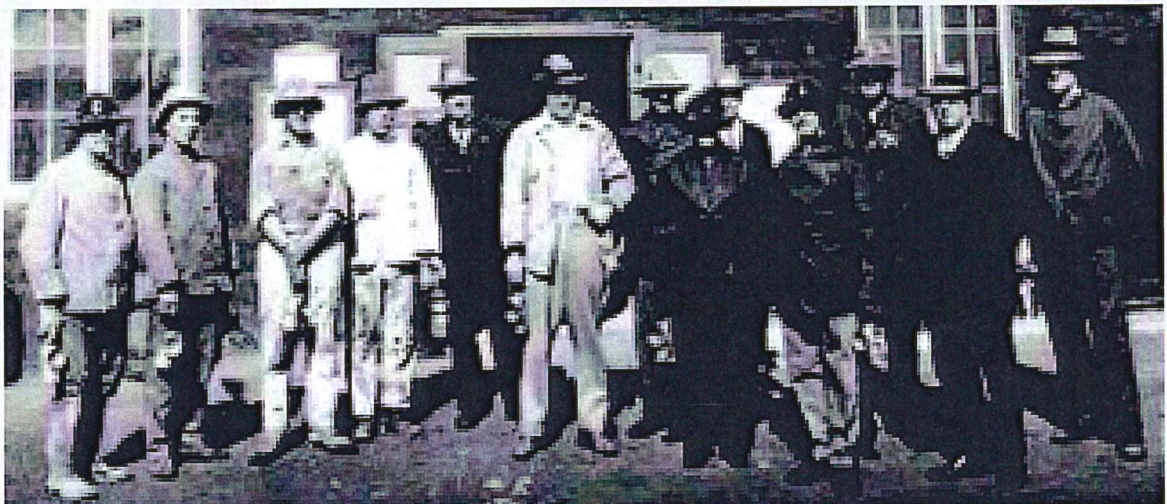




Photo 13



Photo 14



Photo 15

LOOKING FOR OLLIE GEORGE

I'm looking for photos of Ollie George. We are writing a book about Ollie, featuring stories about his life and the people he encountered. The book will be written in both English and Badimaya, his mother tongue, and will feature artwork, photos and as much biographical information as we can gather. The book is in the late stages of completion, with the rest of the content already finalised. We are now just chasing any and all photos that we can find.

Ollie used to work and ride throughout the region and seems to be universally known (every time I go somewhere and speak to someone they always remember him as 'that excellent horseman'!). He worked at Lake Way for some years with George Luken (and the person who came after Mr Luken), and spent lots of time in Wiluna, as well as Leonora. From his accounts, he rode in events in Wiluna, Leonora, Leinster as well as further over towards the Murchison and Gascoyne at places like Yalgoo, Cue and Meekatharra.

I am chasing any photos of Ollie that are remotely related to riding – whether they are photos of him on a horse, riding at a gymkhana, up on a podium (if that was how it was done!) or anything else. He would have been riding between the 1950s and the 1980s, though I can't pinpoint much more specifically than that. Ann Pilkington at Kirkalocka found his name listed in Hoofs and Horns in December 1974, though there was no photo accompanying it. Additionally, if there are any other photos of him (say from Lake Way), I would love to see them too.

I would be so grateful if you could pass this message on to anyone else who may be able to help. I am happy for them to contact me directly if that makes it easier as well.

If you need any further information or come across any further information, please do get in touch!

Thanks so much again and hopefully your drive up the highway wasn't too long – I lived in Leinster as a kid and know that road can seem very long at times!

Cheers
Rosie

--

Rosie Sitorus
Linguist
Bundiyarra – Irra Wangga Language Centre
PO Box 4027
(Cnr Blencowe and Eastward Roads)
Geraldton WA 6531
Phone: (08) 9920 7900
Fax: (08) 9964 5283
linguist1@irrawangga.org.au

Urdama wanggaya!
(‘talk later’ in Wajarri language)

**Shire OF
Wiluna**



CASUAL LABOURERS REQUIRED

**THE SHIRE OF WILUNA IS SEEKING TWO
CASUAL LABOURERS FOR
GENERAL MAINTENANCE DUTIES**

**To apply please contact the Shire of Wiluna reception by calling
99818000 or visit reception to fill out an application form.**

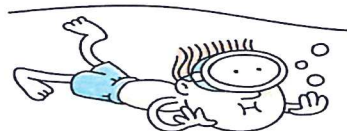
ADMINISTRATION SUPPORT/RECORDS

The Shire of Wiluna is seeking someone to fill the position of
Administration Support/Records Officer.

A Position Description is available by contacting Katrina on
99818000 or by emailing admin@wiluna.wa.gov.au

WILUNA SWIMMING POOL CLOSE OF SEASON

**THE SWIMMING POOL WILL CLOSE
FOR THE SEASON ON APRIL 25, 2017**





Ingredients:

4 cups plain flour/2 x 7g sachets dried yeast/ $\frac{1}{4}$ cup caster sugar/ $1\frac{1}{2}$ teaspoons mixed spice/Pinch of salt/ $1\frac{1}{2}$ cups currants/40g butter/300ml milk/2 eggs, lightly beaten

Flour Paste

$\frac{1}{2}$ cup plain flour/ 4-5 tablespoons water

Glaze

$\frac{1}{3}$ cup water/2 tablespoons caster sugar/butter, to serve

Method:

Step 1—Combine flour, yeast, sugar, mixed spice, salt and currants in a large bowl. Melt butter in a small saucepan over medium heat. Add milk. Heat for 1 minute, or until lukewarm. Add warm milk mixture and eggs to currant mixture. Use a flat-bladed knife to mix until dough almost comes together, Use clean hands to finish mixing to form a soft dough.

Step 2—Turn dough out onto a floured surface. Knead for 10 minutes, or until dough is smooth. Place into a lightly oiled bowl. Cover with plastic wrap. Set aside in a warm, draught-free place for 1 to $1\frac{1}{2}$ hours, or until dough doubles in size.

Step 3—Line a large baking tray with non-stick baking paper. Punch dough down to its original size. Knead for 30 seconds on a lightly floured surface until smooth. Divide into 12 even portions. Shape each portion into a ball. Place balls onto lined tray, about 1cm apart. Cover with plastic wrap. Set aside in a warm, draught-free place for 30 minutes, or until buns double in size. Preheat oven to 190°C or 170°C fan forced oven.

Step 4—Make flour paste: Mix flour and water together in a small bowl until smooth, adding a little more water if paste is too thick. Spoon into a small snap-lock bag. Snip off 1 corner of bag. Pipe flour paste over tops of buns to form crosses. Bake for 20 to 25 minutes, or until buns are cooked through.

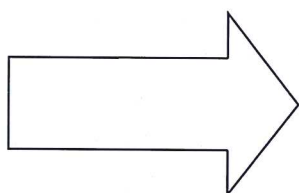
Step 5—Make glaze: Place water and sugar into a small saucepan over low heat. Stir until sugar dissolves. Bring to the boil. Boil for 3-4 minutes. Brush warm glaze over warm hot cross buns. Serve warm or at room temperature.

Notes: These buns are best eaten on the day they are made. Otherwise, freeze for up to 7 days. To defrost in microwave, place 1 hot cross bun onto a sheet of paper towel. Heat, uncovered, for 45 to 50 seconds on MEDIUM-LOW (DEFROST) (30%) power. Stand for 1 minute.

Sudoku

Sudoku, is a logic-based, combinatorial number-placement puzzle. The objective is to fill a 9×9 grid with digits so that each column, each row, and each of the nine 3×3 subgrids that compose the grid contains all of the digits from 1 to 9. The puzzle setter provides a partially completed grid, which for a well-posed puzzle has a unique solution.

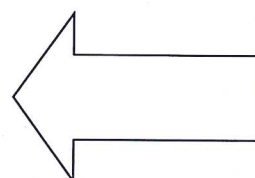
No. 1



4		6				2		9
5	7		2		6			
		1			5			8
6		3	4	8	1	7		
7			5			3		
		5						
	8	9				4	3	
	6							1
3		4					6	7

4	8	7		5			6	
9			4					3
2		6		8	9	5		
		4		1	5	6		
1					4		5	
	7	8	2					
					8		7	
7	5						3	
	2			3	7	4	1	

No 2



Joke Page

The most wasted
of all days
is the one
without
Laughter
-E.E.Cummings

**LIFE IS
BETTER
WHEN
YOU'RE
LAUGHING.**

IF YOU
LAUGH
A LOT,
WHEN YOU GET OLDER
YOUR WRINKLES WILL BE
IN THE RIGHT PLACES.

A man feared his wife was not hearing as well as she used to, and he thought she might need a hearing aid. Not quite sure how to approach her, he called the family doctor to discuss the problem. The doctor told him there is a simple informal test the husband could perform to give the doctor a better idea about her hearing loss.

Here's what you do," said the doctor. "Stand about 40 feet away from her and in a normal conversational speaking tone see if she hears you. If not, go to 30 feet, then 20 feet, and so on until you get a response."

That evening, the wife is in the kitchen cooking dinner, and he was in the den. He says to himself, "I'm about 40 feet away. Let's see what happens." In a normal tone, he asks, "Honey, what's for dinner?" No response.

So, the husband moves closer to the kitchen, about 30 feet from his wife, and repeats, "Honey, what's for dinner?" Still no response. Next, he moves into the dining room where he is about 20 feet from his wife and asks, "Honey, what's for dinner?" Again, no response. So, he walks up to the kitchen door, about 10 feet away. "Honey, what's for dinner?" Again, there is no response.

So, he walks right up behind her. "Honey, what's for dinner?"

"Trevor, for the 5th time, CHICKEN!"

A man was flying from Melbourne to Perth. Unexpectedly, the plane was diverted to Adelaide along the way. The flight attendant explained that there would be a delay, and if the passengers wanted to get off the aircraft the plane would re-board in 50 minutes. Everybody got off the plane except one lady who was blind. The man had noticed her as he walked by and could tell the lady was blind because her guide dog lay quietly underneath the seats in front of her throughout the entire flight.

He could also tell she had flown this very flight before because the pilot approached her, and calling her by name, said, "Kathy, we are in Adelaide for almost an hour. Would you like to get off and stretch your legs?"

The blind lady replied, "No thanks, but maybe my dog would like to stretch his legs."

Picture this: All the people in the gate area came to a complete standstill when they looked up and saw the pilot walk off the plane with a guide dog! The pilot was even wearing sunglasses. People scattered.

They not only tried to change planes, they were trying to change airlines!

SCHOOL IS OUT!



WORD SEARCH

Find and circle all of the words from the word list below.

WORD LIST

amusement
break
diploma
family
friends
fun
graduation
happy
holiday
recreation
relaxation
summer
sunshine
vacation

H	H	A	J	S	U	Y	W	I	W	Q	M	X	W	T
H	R	R	J	C	L	V	K	G	E	S	Y	N	Z	N
Y	L	E	V	I	D	V	A	C	A	T	I	O	N	F
F	E	L	M	Y	I	H	S	U	N	S	H	I	N	E
R	C	A	H	O	P	A	A	D	H	U	E	L	J	A
I	F	X	O	U	L	P	M	N	J	K	K	G	T	M
E	E	A	L	R	O	P	S	X	A	Q	X	O	Y	U
N	W	T	I	M	M	Y	F	E	F	F	W	G	Q	S
D	V	I	D	J	A	Z	R	U	E	J	T	D	X	E
S	Q	O	A	P	X	B	X	X	N	C	M	G	I	M
A	U	N	Y	R	E	C	R	E	A	T	I	O	N	E
M	L	M	M	P	G	R	A	D	U	A	T	I	O	N
V	H	I	M	B	T	U	I	C	Z	F	U	S	J	T
S	Q	H	N	E	Y	E	Y	W	C	H	C	A	Z	W
H	F	N	H	F	R	Z	M	M	F	J	O	B	Q	A



Sudoku Answers

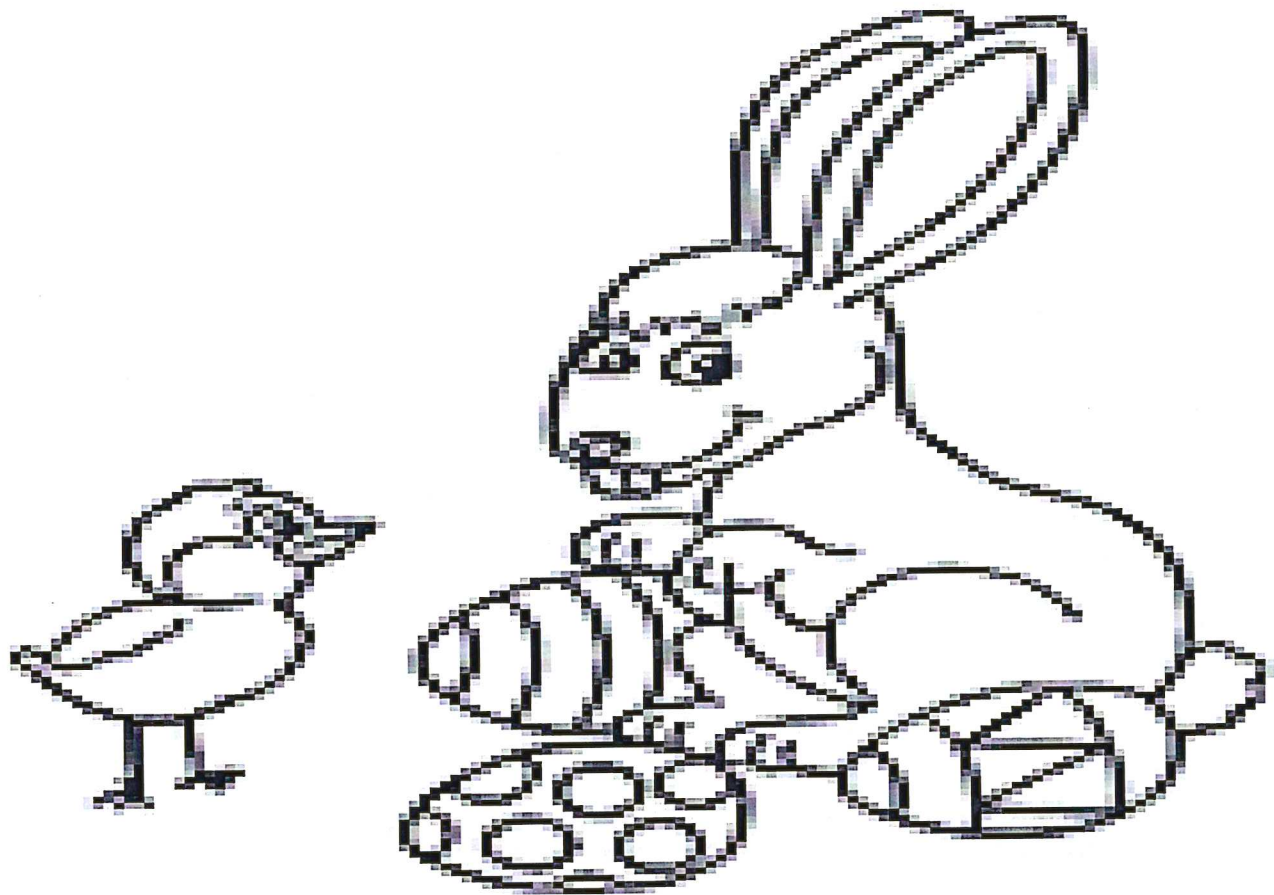
4	3	6	1	7	8	2	5	9
5	7	8	2	9	6	1	4	3
9	2	1	3	4	5	6	7	8
6	9	3	4	8	1	7	2	5
7	1	2	5	6	9	3	8	4
8	4	5	7	2	3	9	1	6
1	8	9	6	5	7	4	3	2
2	6	7	8	3	4	5	9	1
3	5	4	9	1	2	8	6	7

No 1

4	8	7	3	5	1	9	6	2
9	1	5	4	2	6	7	8	3
2	3	6	7	8	9	5	4	1
3	9	4	8	1	5	6	2	7
1	6	2	9	7	4	3	5	8
5	7	8	2	6	3	1	9	4
6	4	3	1	9	8	2	7	5
7	5	1	6	4	2	8	3	9
8	2	9	5	3	7	4	1	6

No 2

Colour Me In





Ngangganawili
Aboriginal Health Service

SCHOOL HOLIDAY ACTIVITY TIMETABLE

Times	Monday 10 TH (W)	Tuesday 11 TH E	Wednesday 12 TH E	Thursday 13 TH K 1)	Wednesday 19 TH (W)	Thursday 20 TH EE	Friday 21 ST K 2)
10am-12	Inside activity's Pool table Computers Puzzles MT fruit	Inside activity's Pool table Computers Puzzles MT fruit	Inside activity's Pool table Computers Puzzles MT fruit	Inside activity's Pool table Computers Puzzles MT fruit	Inside activity Pool table Computers Puzzles MT fruit	Inside activity Pool table Computer puzzles MT fruit	Inside activity pool table computer puzzles MT fruit
12-1	Pack away and leave for lunch	Pack away and leave for lunch	Pack away and leave for lunch	Pack away and leave for lunch	Pack away and leave for lunch	Pack away and leave for lunch	Pack away and have lunch. BBQ
1-3	Outside activity basketball	Football oval	Outside activity netball	Football oval	Outside activity tennis	Football oval	Outside activity free time
3-4	Pack away and clean up.	Pack away and clean up.	Pack away and clean up.	Pack away and clean up.	Pack away and clean up.	Pack away and clean up.	Pack away and clean up.



Buy, Sell, Trade & Wanted



It's a 1996 ROMA, 21 foot long.
Comes with a big fully enclosed
annex. Great condition inside and
out. \$12,000 inc. Please call
Frank on 0417187128

If you have any items to advertise or requests, please contact Katrina Boylan at the Shire of Wiluna on email admin@wiluna.wa.gov.au or phone 9981 8000