

THINGS TO SEE AND DO IN TOWN

A Tjukurba Gallery

Located behind the Shire Office buildings – meet some of the local Martu artists, or view a range of quality artwork for sale. Phone 9981 8000

B Former State Battery

Opened in February 1904, the State Battery would have processed local ore right through till its closure in the 1940s.

C Old Hospital (now Shire Offices)

Take a walk around the graceful old hospital buildings, birthplace of many local Martu people – and the former Governor-General Major General Michael Jeffery.

D Historic morgue (& Alfred Canning's drill)

Just north of the old hospital (Shire Offices) is the original town morgue – which now houses Alfred Canning's original drill!

E Old Railway Goods Shed

On the way to Red Hill you pass the original Goods Shed, the last remnants of what was once a busy railway station. Stop and explore – see if you can still hear the whistle of an approaching train...

F Red Hill Lookout

Just 1200 metres south of town, this rocky rise gives wonderful views over the old “suburbs” of Wiluna, across to the gold mine to the east, and back to the town itself.

G Remnants of old Wiluna townsite

Wiluna once stretched 3 km south of the current townsite – go and explore the remnants of what was once a town of 9000 people!

H Statue of “Warri and Yatungka”

In 1977 the “last of the nomads” were brought in from the Western Desert. This statue (currently at the Information Bay) commemorates “The Old Couple”.

I Pioneer and current Wiluna Cemeteries

The original Pioneer Cemetery is 2 km south of the Shire Offices, on Goldfields Highway (turn right at sign). The current cemetery is accessed off Thompson Street. Relive our history through the headstones.

J Canning Stock Route / Gunbarrel Highway junction

Stand at the junction of these two great outback adventure drives, and set your imagination free... When are you going to do them?

K World War II “bomb shelter”

This underground dug-out is thought to have been built in 1940 to provide shelter from possible Japanese air raids on the local arsenic mine, which was a vital cog in the war effort.



THE TOWN HERITAGE TRAIL

The very best way to explore the heritage of Wiluna! Pick up your brochure from the Shire Office, post office, caravan park or shop, and take a stroll around one of these fascinating walks:

- Northern Loop 1650 m
- Southern Loop 1490 m
- Full circuit 2880 m

Follow the brightly coloured marker plates from the trailhead on the corner of Wells and Wotton Streets. Intriguing interpretive panels describe a host of places that have been important to our community, and give a fascinating insight into life in our town.



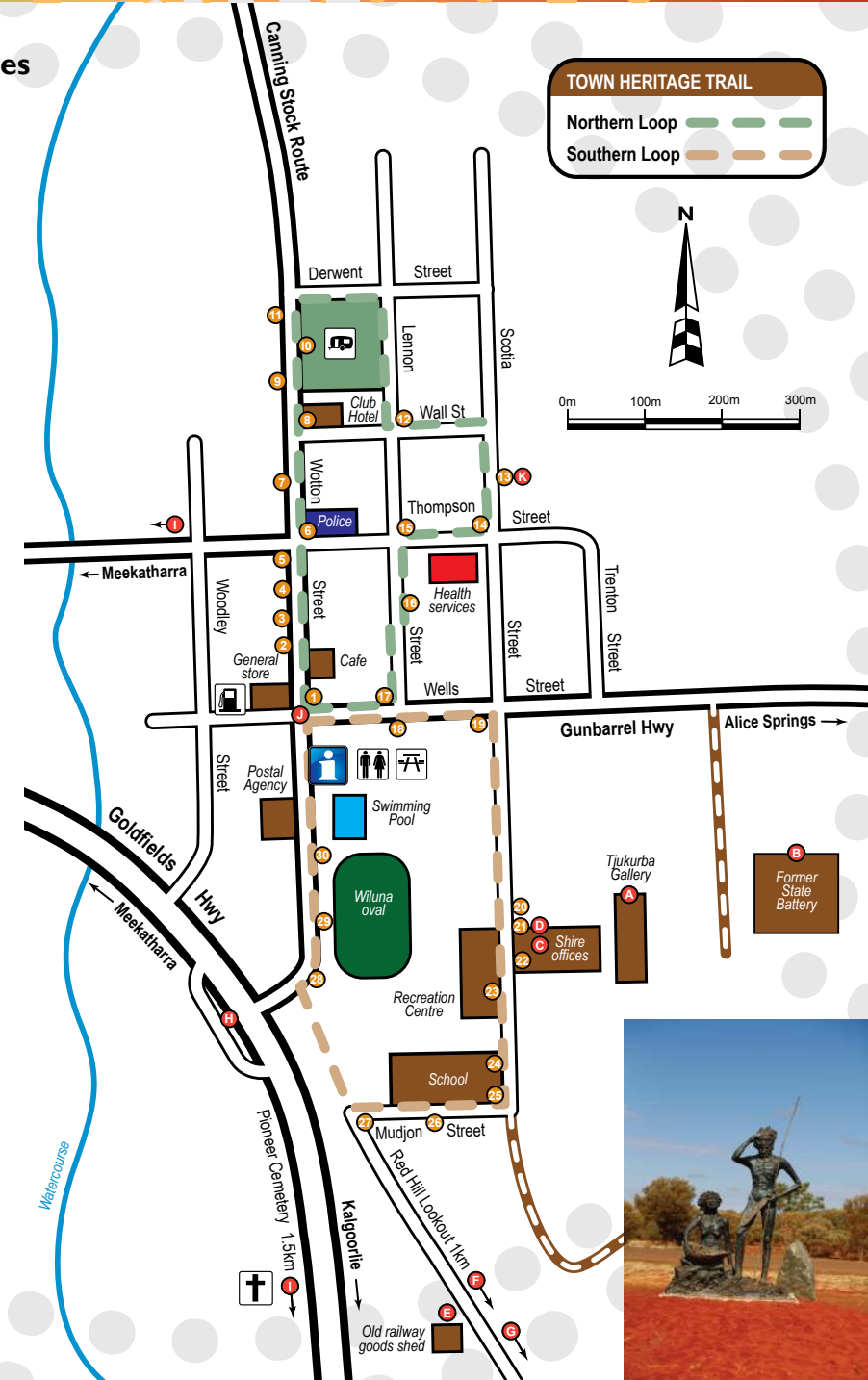
Town Heritage Trail: Interpretive sites

Northern Loop

- 1 D'Orsogna Bros: humble beginnings in Wiluna
- 2 The Pioneer: from store to hall and Mission
- 3 The Weeloona Hotel: the longest bar in the world
- 4 Café Strip: Vi Carter and the Golden Gate Cafe
- 5 Hodder's Bakery: brilliant bread!
- 6 On the beat: policing early Wiluna
- 7 Once were heroes: the town's banks
- 8 Last man standing: the Club Hotel
- 9 The Ambassador: let's go to the movies!
- 10 The Moonlight Hall: a night on the town
- 11 The “old” school: between a rock and a hard place
- 12 Curley O'Connor's Boarding House
- 13 Arsenic mining, and the “bomb shelter”
- 14 A church of many lives
- 15 The Commercial: bringing the best beer to town
- 16 Capital Hall: dance central in the early years
- 17 The magnificent Lake Way Hotel

Southern Loop

- 18 Power for the people: generating electricity
- 19 The gentle sports: bowls and golf in early Wiluna
- 20 The former State Battery: prospector's friend
- 21 The old morgue, and the Matron's House
- 22 The former hospital: still serving the town
- 23 Lifesavers: the original swimming pools
- 24 The new school – and its famous originator
- 25 The Convent School, and its celebrated student
- 26 Red Hill and Lakeside: the outer suburbs
- 27 The Railway Station, and the line to Meekatharra
- 28 Sport: the glue that holds a community together
- 29 You champion! Great games on the town oval
- 30 The first primary school, and the School of Mines



TRAVEL SAFELY AROUND WILUNA

Wiluna is truly the “edge of the desert” – and when you leave here you immediately enter relatively remote country. Travel conditions can be challenging, and you should be well prepared. We are concerned for your safety – but in the end it is your responsibility.

Before you set out:

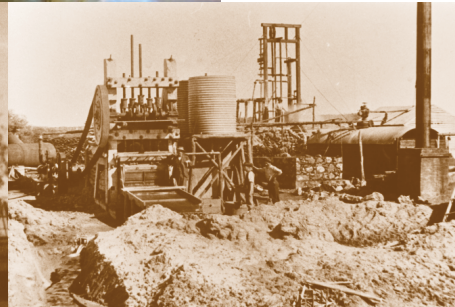
- ☛ Mobile phone coverage is very limited! Consider carrying a CB radio, satellite phone or EPIRB, in case of emergency.
- ☛ Let family or friends know where you're going and when you expect to be back.
- ☛ Be aware that fuel, food and mechanical services are scarce on many outback roads. Pack plenty of water and fuel!

Road conditions:

- ☛ Almost all roads in the Shire are gravel – and many can suffer dramatically after rain or prolonged drought.
- ☛ Creek crossings can be washed out – always slow down as danger can be hard to see.
- ☛ Do not drive past a “Road Closed” sign! You may be liable for the cost of repairs, and may be fined by Main Roads WA.

Other important information:

- ☛ Many roads pass through active pastoral properties – please do not travel or camp off-road without prior permission.
- ☛ If you're prospecting: enjoy trying to “strike it rich”, but be sure to respect active mining leases (keep off!).
- ☛ If you're travelling with a pet dog never let it roam free. Baits containing 1080 poison have been scattered throughout the region to control wild dogs and foxes.



VISITOR INFORMATION / FACILITIES

Shire Office

(Scotia Street, south end) Phone: 9981 8000

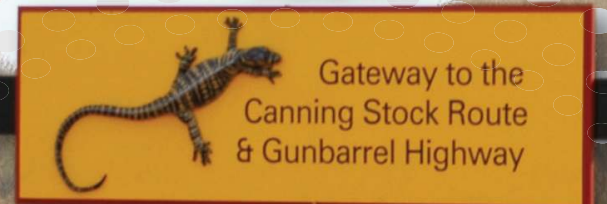
- ☛ Open Monday – Friday, 8.30 am – 4 pm.
- ☛ Tourist information and travel advice
- ☛ Tjukurba Art Gallery
- ☛ Public internet access and library
- ☛ Local road conditions

Accommodation

- ☛ Club Hotel – corner of Wotton & Wall Streets. Rooms, meals, bar. Phone: 9981 7012
- ☛ Wiluna Caravan Park – bookings at Club Hotel
- ☛ Gunbarrel Laager – 11 km east of Wiluna on Gunbarrel Highway. Donga-type accommodation; shared kitchen & ablutions. Phone: 9981 7161
- ☛ Carnegie Station – 353 km east on Gunbarrel Highway. Self-catering donga-style accommodation & fuel. Phone: 9981 2991

Other facilities and services

- ☛ Post Office – Wotton Street, opposite swimming pool. Open Monday – Friday 9 am – 5 pm. Phone: 9981 7031
- ☛ Police Station – corner Wotton & Thompson Streets. Phone: 9981 7024
- ☛ AMS Medical Service – Thompson Street. Open Monday – Friday 8.00 am – 4.30 pm. Phone: 9981 7063
- ☛ Gunbarrel Groceries – corner Wotton & Wells Streets. Open 7 days a week for fuel and groceries. Phone: 9980 6011



Pukurlarrinpalatjungkul
Welcome - we are happy to see you!



Well No.1 CSR



North Pool



Rabbit proof fence



Trough at Well No.1



Mingal Pool

OUT AND ABOUT

① Well #1 (Canning Stock Route / CSR)

The first of Alfred Canning's wells can be accessed off the CSR – the turn is 4 km north of town, and from there it is 3 km to the well – and a small sample of this extraordinary historic stock route.

② North Pool

Drive 10 km north on the CSR then turn to the west for another 10 km to reach this delightful rock hole. Lined with lovely river gums, it is a great place for a picnic or an overnight camp.

③ Well #2 (Canning Stock Route)

Travel 38 km north up the CSR to reach the turn to this well – from there it is just 2 km to another of Canning's historic water points.

④ Windich Springs

Set between Wells 4A and 4B, Windich Springs is 183 km north of Wiluna. Named by John Forrest after one of his Aboriginal guides, it is another lovely tree-lined waterway.

⑤ Well #6 (Pierre Spring)

This is an ideal group campsite on the CSR, and a pleasant overnight trip from Wiluna, being some 234 km to the north. Large shady gums, a restored well, fresh water and even an eco-toilet make this a favourite stopping place for many travellers.

⑥ Lake Violet

Drive east from town on the Gunbarrel Highway – just past the end of the bitumen turn south on the Mine Access road. At the T-junction follow a small track straight ahead to reach what is actually part of the broader waterway called Lake Way. This can be a good place to see swans and waterbirds (after rain), but please – no camping!

⑦ Lorna Glen Station

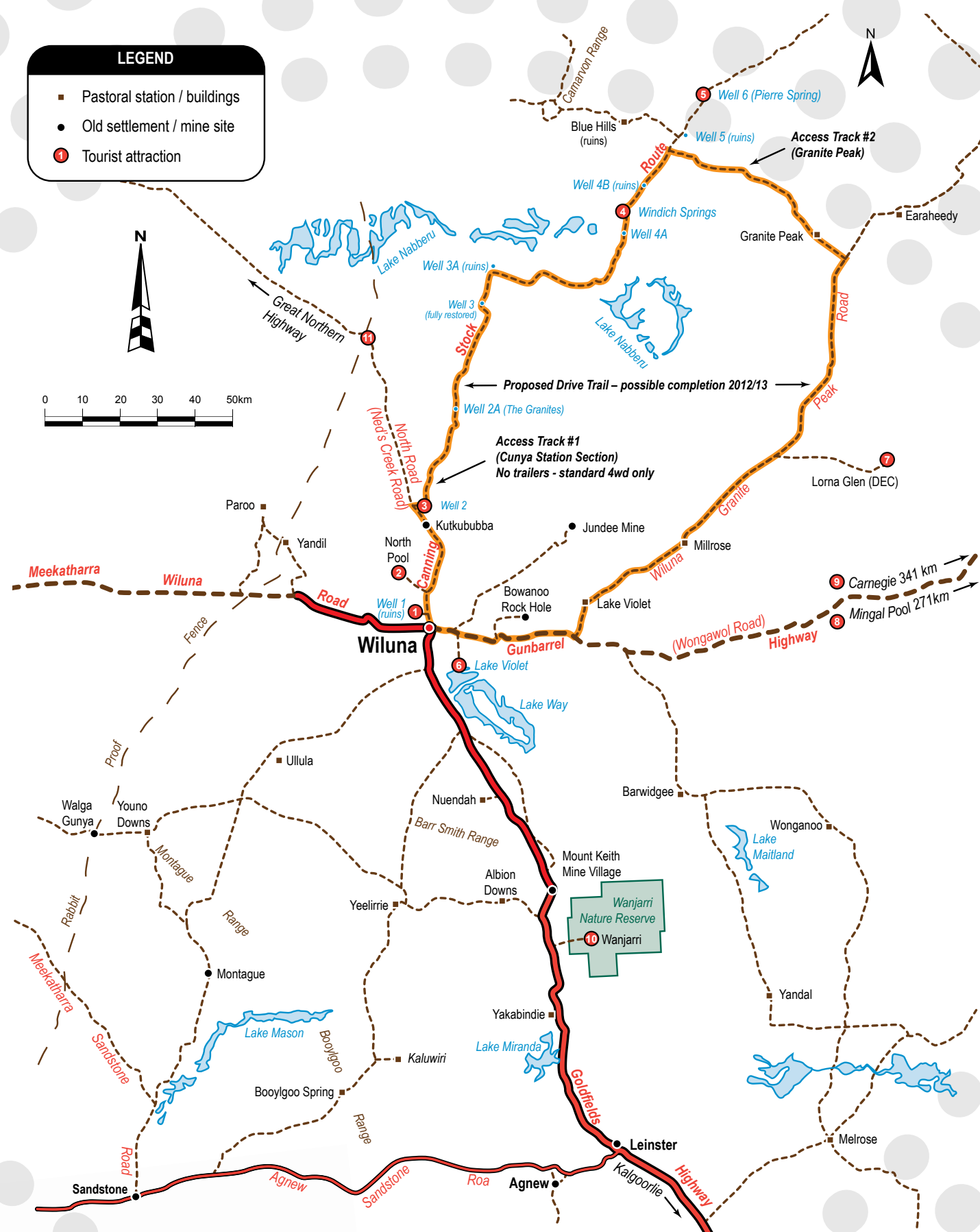
This former pastoral property is 157 km north-east of Wiluna, and now belongs to the Department of Environment and Conservation (DEC). It has been the site of major conservation projects, including the release of bilbies back into the wild.

⑧ Mingal Pool

If you're heading east on the Gunbarrel Highway consider stopping at this beautiful oasis some 70 km west of Carnegie Station. Officially called Harry Johnstone Water, this long tree-lined pool has large shaded picnic shelters and is a delightful place to visit.

⑨ Carnegie Station

Still an operating pastoral property and set in "Len Beadell country" 353 km east of Wiluna, Carnegie is a vital fuel supply point for travellers on the Gunbarrel Highway. Self-catering donga-style accommodation is also available – phone 9981 2991.



A BRIEF HISTORY OF WILUNA (Weelooona: "place of the winds")

Any history of Wiluna necessarily must have two parallel threads – one detailing the European history and the other recognising the infinitely longer story of the Martu people and their connection to this region.

From a European perspective, it was the surveyor, Lawrence Wells, who first passed through the area in 1892. Four years later the prospectors Woodley, Wotton and Lennon discovered gold near Lake Way, a few kilometres south-east of the present townsite. Unlike other goldfields towns, Wiluna did not peak in the early 1900s, with the population only reaching some 600 in that period. Instead, it was the advent of new mining technologies in the 1930s that saw Wiluna blossom, and by 1932 in excess of 9000 people lived here! "Suburbs" stretched 3 km to the south, well beyond Red Hill.

Unfortunately, these boom times only lasted until the mid 1940s, when the Wiluna Gold Mine closed down. By 1953 the population was down to less than 400, and it reached its lowest point ten years later (90 people). Since then it has increased again, mainly due to the growing numbers of Martu people coming in from their traditional country to the north and east.

For the Martu this place was simply an outlying part of a vast and intimately known tract of "country" stretching into the Little Sandy and Gibson Deserts. They passed through this area according to the dictates of seasonal conditions and cultural maintenance.

⑩ Wanjarri Nature Reserve

Wanjarri was the first nature reserve to be created through the purchase of a pastoral lease, way back in 1971. It is now under the control of DEC and is noted for its variety of flora and fauna, with over 100 different species of bird having been documented. The turn is approximately 100 km south of Wiluna, and from there it is some 14 km to the old homestead (follow the signs).

⑪ Rabbit Proof Fence

Construction of the Number 1 Rabbit Proof Fence began in 1901. It stretched 1834 km from the south coast to the north-west coast, near Port Hedland, and crossed the Meekatharra-Wiluna Road approximately 55 km west of town. An interpretive memorial is being planned some 70 km out on North Road, to reflect a local perspective of the broader Rabbit Proof Fence story.

Thorny devil