

Newsletter

Shire OF
Wiluna



Issue 3

August 2009

News of Interest

- NAIDOC Week Photos
- Council News
- Community Programs
- New Sport and Recreation Activities Timetable
- Your monthly Calendar for August
- Canning Stock Route Story
- Cleaning position at Shire of Wiluna

Inside this issue:

NAIDOC Week	1
VSU Group visits Apex	2
Swine Flu	3
Regional Partnership Agreement News	4-5
ASDL2 Demand Register	6-7
Yirra Yaakin Play coming to Wiluna	
Enchanted Ball update	
Cleaner position at Shire Art Gallery News	8-9
Tourism News CSR	
Homemaker news and recipes	10
Photos from NAIDOC	11
Sport and Recreation Calendar & Monthly Community	12-13

PO Box 38

Wiluna WA 6646

Phone: 08 9981 8000

Shire of Wiluna Office

Lot 1486 Scotia Street

Wiluna WA 6646

Fax: 08 9981 7110

Email: reception@wiluna.wa.gov.au

NAIDOC Week

NAIDOC week was held from 5 - 10 July, 2009. The success of the week was due to the committee's hard work and agency support.



There were many sporting events throughout the week. Football was a huge favourite, followed by basketball and softball.



Visiting neighbouring communities Warburton, Mt Magnet, Meekatharra, Mulga Queens attended throughout the week.

NAIDOC week could not have happened without the support from the Wiluna Police, NAHS staff and the sport and recreation staff. Well done for running an exciting week that brought the town alive.



Thank you also to the kids that helped pick up rubbish around the football oval and to the committee members for making sure that the sports and recreation centre rubbish was kept clean.

Local News

Football Tour to Perth

Golden West Resources and Shire Sport and Recreation Department are organizing a football tour to Perth. Male children aged between 12 and 17 have been invited to attend from August 28 to 31. The tour includes accommodation at Ern Halliday, train/play with professional football players including return flights for players and mums. Parents who have children who are interested in going on the tour, please see Tania (now located at the Marrawayurra office) to sign off the consent forms and register their child/children

by Wednesday August 19, 2009.



Community go into the Desert

The community education program sponsored local families to a school holiday camp at Blue Hills. (photo above).

Local (International) Cricket Competition at Bondini

Scotland v Australia

Bondini Community

Sunday 6 & 13 September 2009

BBQ—Soft Drinks—Prizes

Phone: Barrie 9981 7097 or 0427 444 634 to join the Scottish team and Clinton Geary for the Aussie team



Action Group visits Apex Gold

At the invitation of Apex Gold, members of the Wiluna Volatile Substance Use Action Group conducted a site inspection on Saturday August 1.

Some of our children have been going to local minesites to access cans of paint for sniffing. Children were found to be tampering with safety measures put in place at the minesites and putting themselves and mineworkers safety at risk.

The visiting group saw evidence of Apex Gold implementing new policies including the practice of disposing paint cans, to combat the trespassing and substance abuse problem in town. Apex Gold as with other mines will need to continue to ensure that staff do comply with their cans disposal policy.

The Wiluna Volatile Substance Use Action Group will continue to work with

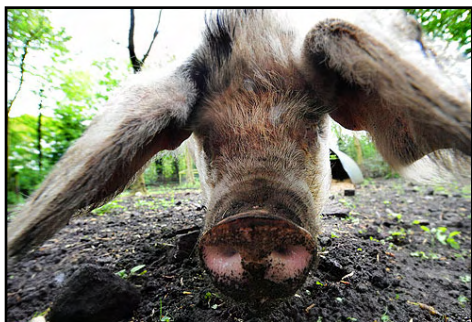
local mines to support their efforts of reducing the access to paint.

The group plan to revisit the mine to ascertain the progress of compliance in the future.



Health News

SWINE FLU NEWS



Why Swine Flu?

Like people, pigs can get influenza (flu), but swine flu viruses aren't the same as human flu viruses. Swine flu doesn't often infect people, and the rare human cases that have occurred in the past have mainly affected people who had direct contact with pigs. But the current swine flu outbreak is different. The current swine flu outbreak is caused by a new swine flu virus that has spread from person to person and it's happening among people who haven't had any contact with pigs.

How to Avoid Catching Swine Flu

- Wash hands after all contact with persons or objects likely to carry infection.
- Make sure you place all

used tissues in bins immediately after use and wash your hands after coughing, sneezing or handling tissues.

- Stay away from crowds and don't travel unless absolutely necessary.
- Keep children warm and inside after sundown.
- Eating mostly fruit, vegetables and drinking lots of water will make your body stronger to fight off any infections
- Avoid kissing babies or children if you have a cold or flu
- Avoid sharing the same cup, knife, fork or spoon.

Symptoms & Treatment of Swine Flu

- High temperature with a headache, severe aches in the bones and sore throat.
- Please see a see the Doctor or any of the Nurses or Health Workers at NAHS if you have these symptoms.
- We are no longer testing for Swine Flu as there are too many for the pathology lab to do.

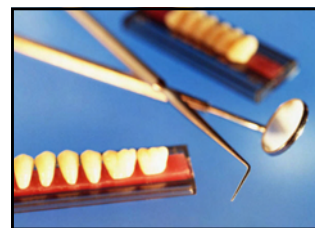
Other Flu's Around

- There is also a viral flu that causes vomiting in the area so please take care and go to NAHS if you are not feeling well.

Specialist Visits



- The **Women's Doctor** and the **Kid's Doctor** will be back in September. Stay tuned for dates.



- The **Dentists** will be at NAHS from Tuesday 25 to Thursday 27 August.

Regional Partnership Agreement News



Activities for

June/July 09

Aboriginal Community Engagement:

Meetings were held with community members on 15 and 23 June 2009. The following people were nominated as community representatives. From Town: Beverley and Vera Anderson, Bondini Glenn Barnes and Kerry O'Brien, Windidda Delvene Patch and Victor Ashwin and Kutkububba Tracey Latu Kuli Kefu (Wongawal). Some of these people attended the RPA Management Committee meeting on 24 June 2009 and spoke strongly about:

Lack of response from government and agents to a request from Bondini community for CDEP assistance to do a community clean up.

The need for better communication with agencies responsible for developing pathways to employment, and more clarity and purpose in what they do (for both mining and non-mining jobs).

The Martu representatives signed a petition asking the State Manager, FaHCSIA to assist in finding a workable resolution to these matters.

The Martu community in the Shire of Wiluna needs support to be enabled to come to RPA meetings as an equal partner. People want a Wiluna focus – previous administrative assistance has been provided remotely from Pt Hedland and most services are still managed remotely (eg from Kalgoorlie or Geraldton). A Wiluna-based Martu administrative facility (a Martu resource centre) is wanted.

RPA Response to matters raised by community:

The RPA Coordinator, Alan Stewart, has commenced discussions with the

following people about finding a systemic response to the matters raised by the Martu representative group:

26 June 2009 – met with Director General, DIA (Patrick Walker) and State Manager FaHCSIA (Roger Barson), and delivered the petition signed by Martu representatives.

29 June 2009 – met with a number of parties expert in community development (including Tim Muirhead, Kim Bridge and Ian Carter CEO Anglicare) to get advice about developing a proposal for FaHCSIA about a strategic approach to Martu community development, as requested in the points above.

6 July 2009 – met with Lt Gen John Sanderson, Chair Indigenous Implementation Committee, about getting that group's high level support to help Martu get the help they need to become a strong voice in the RPA.

The RPA Coordinator has arranged follow up meetings with these senior parties in Perth on 17 July 2009.

Wiluna RPA Management Committee meeting – held Wednesday 24 June 2009.

30 RPA partners attended the meeting from government, industry and community.

There was good Martu representation – the best yet – as a result of the earlier community meetings.

Reports were delivered on the following projects:

Current Projects

Land Leases: process in train to access various commercial, light industrial and residential lots for

lease and sale.

Lot 17 ("Desert Gold") – DPI lodged a forfeiture order on the WDPAC lease on 2 June 2009. The intended result is that the land will be re-leased to people with sound business propositions that demonstrate that the land will be returned to productive use.

New Clinic

Commonwealth funds (\$4.3m) secure; state contribution (\$4.3m) has been committed to the WACHS budget; an undertaking has been given by Lotterywest to contribute to any shortfall due to the long delay (5 years) in progressing this matter, subject to the original design being reviewed and costs re-assessed – that work is under way.

Future Fund

On hold. Requires active interest of potential donors to a creating a common fund. That interest is not apparent in the current economic climate.

Skills Training Centre

Planning well advanced. Estimated opening date now March Quarter 2010.

Driver Training

Advice from FaHCSIA is that an MOU regarding use of the dual-control vehicle is being created between the relevant parties, including training providers (ie NAHS, CWTAFF/Nooda Ngulegoo).

Business Development

The relevant agencies (IBA, DEEWR {Indigenous Small Business Fund} and Small Business Centre Mid West) have met several times and the next meeting is in Perth 10 July 2009. The aim is to have a regular and frequent small business

Regional Partnership Agreement News



development service available to Martu people in Wiluna.

Child Care Facilities – Debbi Baker (FaHCSIA Kalgoorlie progressing)

Shire Strategic Plan

Signed off at June 09 Council meeting

Currently being printed for launch in September/October 2009

Collocation

Stage 1: Renovations to old Marrrawayurra building complete, fit-out progressing and tenants organized (Nooda (CDEP) and the Community Development Manager).

Stage 2: The interest expressed by other parties for stage 2 tenancies, including a shared office for mining companies' visiting officers and business development advisers to be further explored in consultation with community.

Stage 3: Finalize purpose and tenants; source funding and tender for site development.

Justice issues - Aboriginal Justice Agreement development will be managed locally by Sgt McCutcheon.

Child Protection

A local action group chaired by Delvene Patch and David Molloy (teacher) has developed a draft action plan to address paint sniffing problem. The group meets at 3pm Wednesdays at the NAHS meeting room.

Biofuels Trail (Albion Downs)

The research and development phase is completed and a report is being prepared by Nickel West.

Other miners are starting to become interested in the project.

Bondini Redevelopment

RPA Coordinator met with the Aboriginal Lands Trust (ALT) on 3 July 09. The ALT will begin exploring governance options that will allow the creation of a "master plan" for the redevelopment to enable contributions from industry and government in partnership.

Arts and Cultural Activity

The development of an arts and cultural centre is in early planning stage.

Shire Tourism development plan is being written.

Shire/NAHS partnership to contribute to a Martu oral history project (which is in turn related to the CDNTS led Land management/Land Care project).

Birriliburu Artists continue to participate in exhibitions, establishing a good reputation for their work and good sales through the Tjukurba Art Gallery

Artists recently participated in a 2 week road trip to other neighbouring Aboriginal art centres including Ngaanyatjarra Lands. A very successful networking and professional development opportunity.

Telecommunications

MWDC (Mark Canny) advised that it was announced on 29/7/09 that Wiluna has been successful in its application for a grant to upgrade to ADSL2+ and will shortly receive confirmation from the Minister. The MWDC will advise further on how the upgrade will be rolled out.

Projects for Priority Attention in September Quarter 2009

Land Management/Land Care

A new project has been established led by Lindsey Langford (Central Desert Native Title Service); its purpose is to develop non-mining social, cultural and economic development opportunities for Martu. The first stage will be to arrange back to country visits, oral history collection and exploration of employment options in land and natural resource management. A first draft of the proposed activities is expected by the end of July 09.

Pathways to Employment

The new Australian government CDEP and work preparation arrangements came into place on 1 July 09. An RPA project will be developed during July 09 around the whole area of pathways to employment.

RPA Coordinator to meet with DEEWR in Perth on Friday 10 July 09 to begin this process, that will involve CWTAFF, CDEP, Skill Hire, Max Employment and Centrelink.

Opal Fuel

Helen Walker (FaHCSIA, Central Australian Petrol Sniffing Strategy) visited to inform community about the Opal Fuel alternative. The Wiluna fuel retailer agreed to work with Helen to investigate the introduction of Opal into Wiluna.

Wiluna ADSL2+ Broadband Internet Register

The Shire of Wiluna in partnership with Telstra and the Mid West Development Commission have been working on a Regional Grant Scheme Project to enable the local telephone exchange at Wiluna to connect with broadband internet services with speeds up to 24 Mb/s. A requirement of this project is to justify the demand for the service. It will only be implemented if



enough people are interested in connecting to ADSL broadband.

The Homemaker Officer has been visiting people over the last month to sign the register. The register does not commit you to join up.

If you have not signed the register, please see the Homemaker Officer who can make sure your name gets added to the list. We need all businesses and community people on the list to ensure that we get ADSL service. Lets get Wiluna hooked up.



Yirra Yaakin Production - 'Good Lovin'

Yirra Yaakin, in association with Healthway, Promoting the Respect Your Culture message, and the WA Department of Health, is proud to present a three day performance and workshop program aimed at encouraging and supporting young people to make positive sexual health choices.

People in our communities are often under pressure to become sexually active before they're ready, with serious consequences - STIs, pregnancy and kids robbed of childhood.

We all know how hard it is to talk about sex with our kids, GOOD LOVIN focuses on; Practicing safe sex, Only when your ready and Respecting your partner.

Using Hip Hop theatre and humour, GOOD LOVIN gets our kids thinking about what's right for them. The GOOD LOVIN program kicks off with a new play, which examines some common youth sexual health problems.

The performance is followed by a two day workshop with trained facilitators and sexual health experts.

The program is open to all young members of the community aged between 12 and 15.

Once the date has been confirmed with Yirra Yaakin for their visit later in the year, we will put it in the newsletter.

Youth Challenge Australia

YOUTH CHALLENGE AUSTRALIA

Indigenous Youth Leadership Program VANUATU

Able to submit a funding submission for a FaHCSIA Advanced Leadership Opportunity to go towards the \$1,000 participant fundraising activity?

Eligible for or currently hold an Australian Passport?

A person of Aboriginal or Torres Strait Islander descent?

For a full position description or additional information please contact Youth Challenge Australia on the following contact number 02 0514 5512.

Are you....

Aged between 18 and 30 years?

Available to undertake a 7 week community development and cultural exchange project in Vanuatu, between 5 December 2009 and 18 January 2010?

Then why not complete and submit the application form and further your leadership journey. (Tania will be happy to help you apply)

http://www.youthchallenge.org.au/YCA/client/GeneralContent/c_singleDynamicPa

Enchanted Masked Ball

In the previous newsletter we informed the community about the Enchanted Masked Ball being held for the youth and adults of Wiluna. The date has been moved until September 12, this gives the community much more time to get your ball gowns, masks and suits for the event.

The cost to attend the event is \$25, this money will be donated to the Princess Margaret Hospital.

More information about the Ball will be advertised in the next newsletter.



Position Advertised: Shire Cleaner



The Shire of Wiluna is seeking applicants to fill in the position of Shire Cleaner.

Approximately 38 – 41 hours per fortnight

Casual Part-time Position

Level 2.4 under the Local Government Officers' Award

Experience in cleaning will be an advantage

The Shire operations are expanding and the areas to be cleaned include the Shire Offices and its Annexes (kitchen, guest units, admin toilets), Verandah Areas, Training Room, Art Gallery/Council Chambers, Sport & Recreation Centre

Toilets and Kitchen, the Community Development/Tourism Office (located at the former Marrawayurra Office).

Please fill in an Employment Application Form at the Shire Office Reception or send your application letter and resume to:

Samantha Tarling
Chief Executive Officer
Shire of Wiluna
PO Box 38
Wiluna WA 6646

Tel: (08) 9981 8000
Fax: (08) 9981 7110
Email:
reception@wiluna.wa.gov.au

**Applications close by
COB Friday, 14 August
2009.**



Tourism News



My Experience on the Canning Stock Route

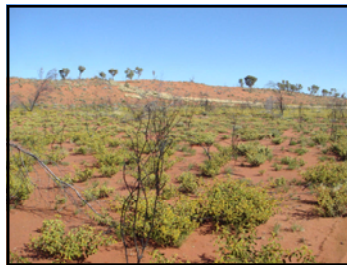
This year I chose the iconic 4x4 Canning Stock Route track as part of my annual leave holiday. We left Wiluna on the 29 June starting from Well 1 stopping to look at all Wells, and seeing this beautiful country, little did we know as we got further along the countryside it only got better. What an amazing experience driving on this track and driving up and over the sand dunes. It gave me a whole new appreciation of Alfred Canning and his surveying party's accomplishments in the early 1900's and pioneering spirit of those who have been here before me. People talk about 5 star hotels, we were staying in a 5 billion star hotel every night we were out there. The night sky, the sun rise and sun set



is the most unbelievable sight you could ever imagine. Doing the Canning Stock Route was one of the best experiences I have ever had. Being the Tourism Officer for Wiluna the trip has been invaluable because now when people ask me for information, I will be able to pass on many of my personal experience and knowledge to them.

Who better to be my travelling partners than the Shire CEO, Samantha and the Shire mechanic and CSR recovery man, Jim Allen and our mascot, Kelpie Min. Samantha is the first Shire of

Wiluna CEO to complete the CSR. This is Jim's first end to end journey after 13 recoveries that took him only as far as Durba Springs over the last 3 years. We all enjoyed the experience of travelling the Canning Stock Route from start to finish.



Art Gallery News

THE ART BLACKMARKET

ASSIST & RESIST

The Tjukurba Art Gallery houses work of the Birriliburu Artists and has been set up to promote, preserve and enrich Martu culture.

Through the Gallery, services are provided to protect the artists from disadvantage in the marketplace, and bring to them, the greatest economic return via marketing and promotion of their work.

If you have been in a situation where you were offered an artwork “off the street” directly from an artist and have conceded to the offer, you have yourself a **bargain**.

You have satisfied the artists' immediate needs, but you have also **taken advantage of the artist** by making a token payment for the artwork.

Removed responsibility from the artist, by encouraging conduct which goes against agreed policies.

Contributed to a lowering of self-esteem, in destabilising the artists market value, and ***Prevented the gallery from recouping its material cost.***

When someone buys artwork directly from an artist who has used the materials and services of the art gallery to produce the work, that buyer is considered in the industry to be operating in the **black market**, and by avoiding the payment of the gallery's rightful commission, is undermining the stability and integrity of the organisation the Shire has developed in support of the community.

Please respect the function and purpose of the gallery and **assist** us by **resisting** the temptation.

Heather Charlton
Art Gallery Manager

EFTPOS Machine

The Gallery recently brought a new portable electronic EFTPOS machine. This means that the Art Gallery Manager will be able to take the machine to mine sites where it will process all cards faster.

In the past selling art at the gallery also meant that the Manager had to leave the gallery and go to the Shire front office with the customer. The new Eftpos machine will save time and increase efficiency when serving customers.

Homemaker News

Training Room

A total of fifty four people used the training room throughout the month of June. People use the training room for their internet banking, phoning Department of Housing and other computer needs. We have recently had all the computers in the training room virus checked and updated. Please let the Homemaker know if you have any further problems with the computer.

Cooking Classes

We would like to see more people in the community attending cooking classes. The classes are held every Wednesday at 12.00pm at the Sport and Recreation Centre.



Ingredients

- 4-6 Lamb Shanks
- 1 cup Barley Soup Mix
- 4 medium Potatoes
- 1 large Onion
- 2 sticks of Celery finely sliced
- 1 Carrot peeled and finely sliced

Instructions

Step 1

Place lamb shanks in the pot with water and simmer for 2 hours.

Step 2

Take the shanks out strain stock and refrigerate until set, about 4 hours or over-night.

Step 3

Take the fat out off the top.

Step 4

Take the meat off the bones and chop up save to add later.

Step 5

Put the water that the meat was boiled in, into a large saucepan and add more water to make up 12 cups in the pot.

Homemaker Office

Office opening hours

8.30am - 4.00pm

Phoning the Bank or Department of Housing hours

Monday, Tuesday, Thursday, Friday

11.00 - 12.00

Internet banking with help

11.00 - 12.00

Internet banking without help

8.30am - 4.00pm

Daily

Lamb Shank Soup

Step 6

Add barley or soup mix, bring to the boil, cover and set aside without cooking for an hour. Remove any scum that has come to the top.

Step 7

Cook for ½ hour and then add chopped potatoes, onion, turnip, celery and carrot.

Step 8

Cook for another ½ hour or until veggies are soft. Add pepper and cooked diced meat, Serve with bread or bread roll.

NAIDOC WEEK PHOTO'S



Sports & Recreation Activity Timetable

Through the Building Healthy Communities program, the Sports and Recreation Centre, Nganngganawili Health Service and the Wiluna Sports and Recreation Committee have jointly created a new sport and recreation program. We invite all organisations and communities to join us in playing mixed sporting games each night. The program begins Monday August 10.

	Day event s	2.30pm 5pm Drop in Times	5.45pm	6pm – 7pm Sports	7pm	7.15pm – 8.15pm Sports	7pm – 8pm Recrea- tion
Mon- day		Drop in Centre	15 mins training warm up	Kids Basketball Kids Netball	15 mins training warm up	Adults Basketball Adults Netball	Recreation centre opened for youth Pool Competition
Tues- day		Drop in Centre Cooking	15 mins training warm up	Kids Touch Ruby Kids Indoor Cricket	15 mins training warm up	Adults Touch Rugby Adults Indoor Cricket	Recreation centre opened for youth Board Games
Wednes- day		Drop in Centre	15 mins training warm up	Kids Football Kids Softball	15 mins training warm up	Adults Football Adults Softball	Recreation centre opened for youth Table Tennis
Thurs- day		Drop in Centre Art and Craft	15 mins training warm up	Kids Volleyball Kids Tennis	15 mins training warm up	Adults Volleyball Adults Tennis	Recreation centre opened for youth
Friday		Drop in Centre					Recreation centre opened for youth
Saturday	To be finalised						
Sunday	Kids play Football with other towns	2.00pm Adults Golf					

AUGUST COMMUNITY CALENDAR

Sun	Mon	Tue	Wed	Thu	Fri	Sat
						1
2	3	4	5 12pm Cooking Every Wednesday	6	7	8
9	10	11	12 12pm Cooking Every Wednesday	13	14	15
16	17	18	19 12pm Cooking Every Wednesday	20	21	22
23	24	25	26 12pm Cooking Every Wednesday	27	28	29
30	31		Child Protection Week September 6 - 13, 2009			