

## OCTOBER 2017 NEWSLETTER

# *The Wiluna Wire*



Wiluna railway station 1973

# EVERYONE IS WELCOME!

Hello and welcome to the October edition of the **Wiluna Wire**. In this edition we have submissions from a number of Wiluna agencies and individuals. We would love to make the **Wiluna Wire** into an informative, interesting and entertaining newsletter, that includes submissions from all sections and ages of the Wiluna community. The newsletter will only be as good as the submissions we receive!

If you have any feedback, suggestions and or submissions, please come into the Wiluna Shire and have a chat. Contact can also be made by phone— 9981 8000 or email [admin@wiluna.wa.gov.au](mailto:admin@wiluna.wa.gov.au)

Regards Wiluna Shire staff

## Wiluna Weather Almanac

### October

#### Temperature

Mean Maximum Temperature (°C) 30.4

Mean Minimum Temperature (°C) 13.9

#### Rainfall

Mean Rainfall (mm) 7.2

Decile 5 (median) rainfall (mm) 1.8

Mean number of days of rain  $\geq$  1mm 1.1

#### Sunshine

Mean number of clear days 19.9

Mean number of cloudy days 2.6

#### 9am conditions

Mean 9am temperature (°C) 22.4

Mean 9am relative humidity (%) 33

Mean 9am wind speed (km/h) 12.9

#### 3pm conditions

Mean 3pm temperature (°C) 29.2

Mean 3pm relative humidity (%) 19

Mean 3pm wind speed (km/h) 12.7

# Water Water

There has been some talk about the water in town being un-fit for drinking due to arsenic.

Below is the response from Water Corporation.



Under our Drinking Water Quality framework it is our standard / routine practice to sample the water source and town water supply network for certain characteristics and elements on a regular cycle. This includes taking a sample and testing for arsenic on a quarterly basis.

In Wiluna, we've had no detection of arsenic in either the town drinking water supply network or the water source in the last 15 years. Furthermore, the source of supply (3 groundwater bores) has not been identified as having any risk of arsenic.

The Wiluna town drinking water is supplied from an advanced treatment plant, using Electrodialysis Reversal (EDR) technology. Among its other treatment functions, its purpose is to address the naturally occurring elevated nitrate level within the source water, and to reduce the nitrates to levels that meet the health guidelines.

Whilst we have the advanced EDR treatment plant in place, the Wiluna town water supply currently has a Department of Health Nitrate exemption, whereby children below the age of 3 months should be provided with water from an alternative source for bottle feeding. This is currently provided by arrangement through the NAHS facility, and alternatively a direct delivery to a customer if we're advised by the Community Health Nurse of a new bottle-fed infant in Wiluna.

Besides the historical nitrate levels, the Wiluna town drinking water supply has met all health related guideline requirements as can be seen within the Drinking Water Quality Annual Report (<https://www.watercorporation.com.au/-/media/files/about-us/our-performance/drinking-water-quality/annual-report-2016.pdf>). The report also provides some further detail regarding the treatment technology employed at Wiluna.



## CEO's Report

The 2017 Local Government Elections will be held on the 21 October, with the Shire of Wiluna holding a postal election that is run by the WA Electoral Commission. The Shire plans to use the Wiluna Recreation Centre as a polling place on election day. Voters will be able to either post their ballot paper to the WA Electoral Commissioner in Perth or drop it off at the Wiluna Recreation Centre between 8.00 am to 6.00 pm on election day.

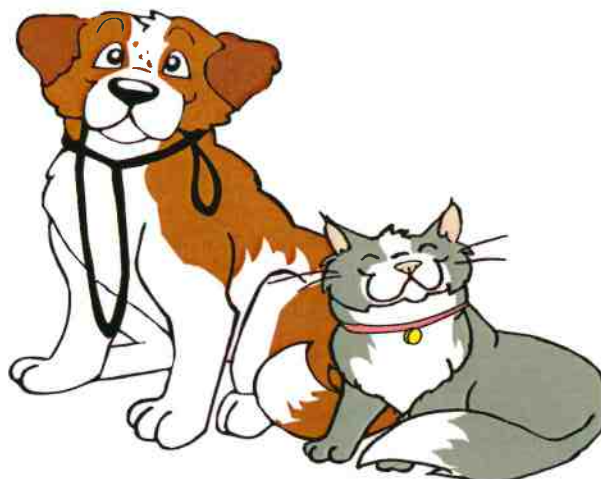
All electors are encouraged to have their say by casting their vote. This election has six candidates competing for four Council positions.

Have you noticed any improvements around Wiluna lately? The Shire has undertaken a number of minor maintenance projects which included repairs to the children's playground (next to the Wiluna Public Swimming Pool), cricket practice nets as well as seating at the Wiluna Cemetery.

The Shire will be holding a Grand Opening of the Tjukurba Art Gallery on the 19 October 2017 between 5.00 to 7.00 pm. All members of the community are welcome to come and celebrate the opening as well as enjoy a free BBQ at the gallery. Paint and canvas supplies are now available to artists.

Tenders have just closed for the renovation of the former Club Hotel building. Once Council has considered the tender submissions at its next Ordinary Council Meeting, a successful Tenderer should be appointed. The Shire plans to have this project completed just before the end of this financial year.

The Shire will shortly be focusing on dog control within the Wiluna townsite. So don't forget to register your dogs and cats. New registrations are due on 1 November 2017.





# Council News

In April of this year, Council was approached to make a donation towards the employment of a TAFE coordinator by the Wiluna Remote Community School. This position has allowed the disused TAFE building to become operational again. The Shire believes an operational TAFE facility will generate a number of training and/or employment opportunities for the local community and therefore is worth supporting.

A cheque for \$30,000 was presented to Adriano Truscott, Wiluna Remote Community School Principal by Mr Colin Bastow, the Acting CEO for the Shire of Wiluna.

Pictured below is Adriano, Colin, Mac and Alwyn, the TAFE coordinator and lecturer, and students.



# Media Release

**Vincent Catania MLA**  
Member for North West Central

Media Release

September 12, 2017

## **Catania angry that MidWest and Murchison regions have been punished in Budget**

Nationals WA Member of Parliament for North West Central, Vince Catania MLA has said that the first State Budget handed down by Premier Mark McGowan and Treasurer Ben Wyatt is unnecessarily harsh for the MidWest and Murchison regions.

Labor's Budget papers have revealed that the Royalties for Regions program has been slashed and most of the projects across regional WA, that have been planned with money already allocated towards them by the previous Liberal/Nationals Government, have been scrapped in favour of Labor's big spending election commitments in Perth.

Mr Catania said "I'm angry on behalf of everybody in my electorate that have worked for many years to plan and develop projects that will have a significant and lasting effect on the development of the region."

"Projects like the \$60million Wiluna to Meekatharra Road, \$5.4million Mt Magnet Nursing Post and the \$10million Meekatharra Hospital have been thrown on the scrap heap just so Mark McGowan can pander to his voter base in Perth."

"This is a kick in the guts for these communities who have waited years for these projects to be developed, finally getting funding approval, only to have it ripped away from them at the last moment by this cruel Government," Mr Catania said.

During this year's election campaign, the WA Labor leader Mark McGowan, promised to protect the Royalties for Regions program and continue funding regional projects.

Mr Catania said "Labor criticised everything the Nationals WA did for 9 years, saying that we were wasting money and that they would spend it better when they got back into government."

"It was all a lie and Labor have now shown that they don't care about the people of regional WA or development of projects that would afford some level of equality with the metro area."

"They expect everyone across WA to pay more for power and water, extra vehicle registration fees and have created new taxes when they promised that they wouldn't. But what they won't do is continue to develop the areas of WA that actually make the money for our State."

"Make no mistake. The people of the MidWest and Murchison regions have been well and truly shafted by this Labor Government," Mr Catania said.

For media enquiries please contact Vince Catania on (08) 99412 999 or email [northwest@mp.wa.gov.au](mailto:northwest@mp.wa.gov.au)

[Northwest@mp.wa.gov.au](mailto:Northwest@mp.wa.gov.au)  
[www.vincentcatania.com.au](http://www.vincentcatania.com.au)  
facebook @VinceCataniaMP

20 Robinson Street Carnarvon WA 6701  
PO Box 1000 Carnarvon WA 6701  
Twitter @VinceCatania

Tel 9941 2999  
Fax 9941 2000



[www.buildyourwa.com.au](http://www.buildyourwa.com.au)

**THE NATIONALS**  
*for Regional WA*





# Tjukurba ART GALLERY

## GRAND REOPENING

Thursday 19th October  
5:00-7:00pm

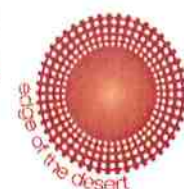
After extensive renovations, the gallery has reopened to the public.

We welcome all members of the community to visit the new space and join us for a BBQ at the gallery.

- Paint and canvas supplies will be available for artists

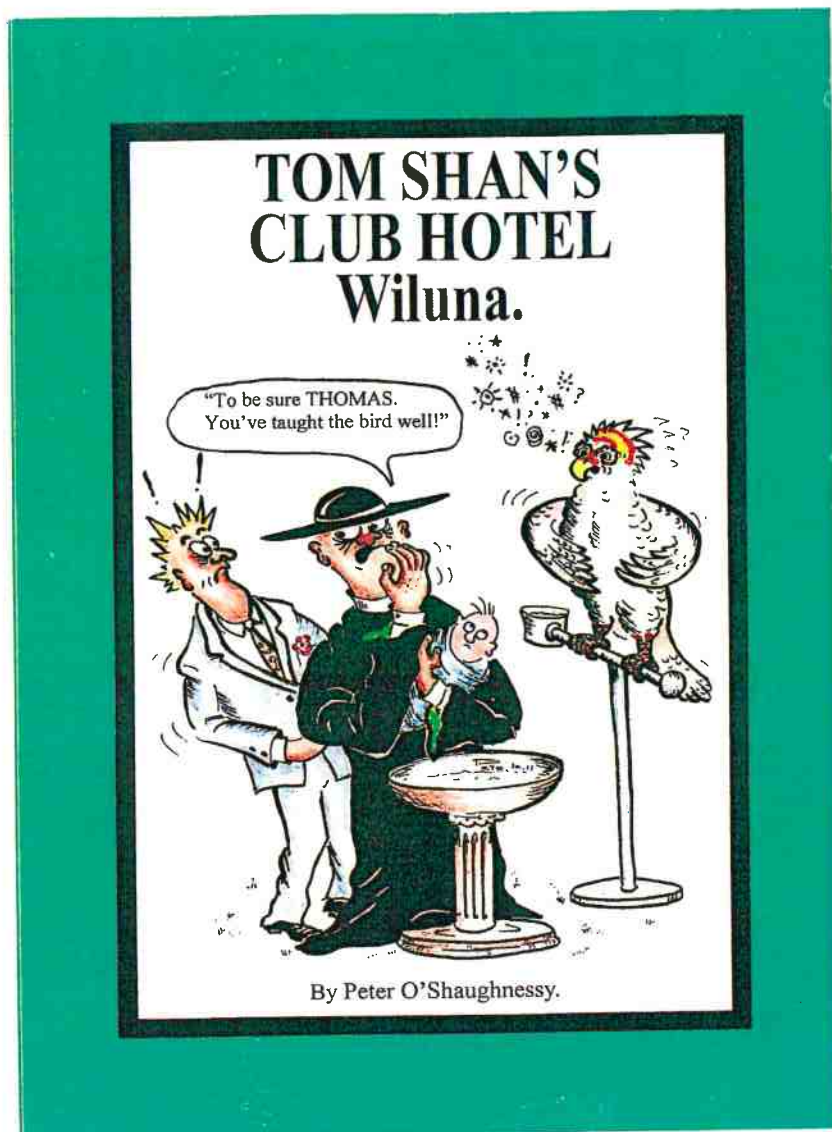


**Shire OF  
Wiluna**



## A BLAST FROM THE PAST

We have received a small supply of the below book from Mr Peter O'Shaughnessy whose family has had a long association with the Club Hotel. The book tells many a tale of Wiluna at it's peak and is full of history. It is on sale for \$22 and we do only have a limited supply so if you are looking for something unique don't delay.





Below is a poem written by Mr Peter O'Shaughnessy. It was awarded second place in the 2017 Banjo Paterson Writing Awards. We hope to have more of Peters' poems and stories in future editions.

## Romeo and Juliet.

( The Last of the Nomads.)

Two tribes, alike in long lost desert lore  
The Mandildjara set the lovers theme  
A lover's lust has lead to tribal war  
And banishment destroys the lover's dream.  
The endless desert now is where they roam  
And lonely Mudjon, Warri's only friend  
Must seek them out and try to bring them home  
Or at his hand their lawless lives must end.

In desert drought their lonely lives are spent  
Their old dogs with them as they near their end  
Until the Mandildjara tribes relent  
And Mudjon, searching, finds his childhood friend  
But Warri, the lost Martu's life is through  
And pinning for him, sad Yatungka's too.

The last nomads.

The sad but true story of Warri and Yatungka two young lovers who defy tribal taboos, marry and elope evokes a comparison with Romeo and Juliet.

Childhood friend, Mudjon is sent to bring them back but after a furious spear fight the lovers are exiled by the Mandildjara elders, into the Simpson Desert.

After many years wandering in this desolate country they are found by their old friend Mudjon who returns them to Wiluna where Warri soon dies. Yatungka refuses to eat or drink and dies soon after.



**LOCAL GOVERNMENT ORDINARY POSTAL ELECTION  
ELECTION NOTICE**

**Shire of Wiluna**  
(Local Government Act 1995, s4.64)

The Shire of Wiluna is holding an election by postal vote on Saturday, 21 October 2017 to fill vacancies in the offices of Councillors as listed below:

**District                                      4    Councillors**

GRUNDY, Peter  
QUADRIO, Jim  
LONG, Lena  
CALLOW, Pauline  
HARRIS, Graham  
WELLER, Bernard

**Election Packages** will be sent to all electors on the local government electoral roll where there is an election in their electorate.

**Replacement Packages** can be obtained from the Shire of Wiluna prior to election day and from 8.00am to 6.00pm on election day if the package is not received or should any papers be missing.

**Post your vote early.** Completed postal voting packages must reach the Returning Officer by 6.00pm on election day, Saturday, 21 October 2017.

**You may hand deliver your package** to an electoral officer at the Shire of Wiluna during business hours before election day or at the polling place / any polling place in the district between 8.00am and 6.00pm on election day.

**Chief Polling Place:**

Scotia Street, WILUNA

**The count of votes** will commence at 6.00pm at the Shire of Wiluna, Scotia Street, WILUNA.

**Warren OLSEN**  
**RETURNING OFFICER**  
9981 8000  
0429 400 519



**WESTERN AUSTRALIAN**  
Electoral Commission



# **COUNCIL NOTICE** **CHANGE OF DATE**

**The Ordinary Council Meeting listed  
below has been changed.**

**The Meeting will now be held as  
follows:**

<b>Day &amp; Date</b>	<b>Venue</b>	<b>Changed to</b>
<b>12.30pm Fri 29 Sept 2017</b>	<b>Council Chambers Heritage Centre</b>	<b>12.00pm Wed 11 Oct 2017</b>



# GOLD

When Mr. Lawrence E. Wells passed through the Lake Way district in 1892 with the scientific expedition led by David Lindsay, he reported it to be a promising auriferous country. His report proved to be only too true, for when he revisited the Lake Way District in 1896 in charge of the Calvert Expedition he found a township and goldfield already established. The first mining leases were Monarch of the East mines, which went into production almost immediately. Wiluna will always remember three of the first prospectors to come to this area, Messrs, Woodley, Wotton and Lennon for three of the town's main streets have been named after them.

“Mr. Wotton arrived in Cue on Wednesday in hot haste to register a tract of New Country out at Lake Way, about 100 miles almost due east of Nannine. Five 20 acre blocks were registered. Mr. Wotton considers this will be one if not the greatest reefing field in W.A.”

As late as 1929 this opinion was still unchanged. Mr. H.E. Vail, the consultant engineer to the Wiluna Gold Mine Corporation Ltd. W.A. reported,

“Since the beginning of operations, I have been entrusted with the development of the mine, determining the most suitable methods of treatment for extracting the gold. I have no reason to alter my opinion that this will rank among the foremost of the world's largest gold mines”.

This indeed proved true. The Wiluna Gold Mine became the largest mine in the southern hemisphere, treating from 52,000 to 56,000 tons of ore per month. In presenting a report on the request of the Wiluna Gold Mines Ltd., for a railway connection between Wiluna and the State railway system the mining officials claimed that they have proved that the Wiluna Gold Mine was capable of an output of approximately 1,000 tons of ore per day. An output such as this meant a workforce of approximately 800 men, and a population from 3—5,000 with the possibility of several other mines coming into production. They therefore argued that such traffic requirements justified a railway.

For the early prospectors life was very difficult, and they were unable to develop their holdings as they wished. These prospectors deserve the highest praise for the amount of work which they were able to do. In many cases they were forced to carry water for many miles while prospecting their claims, and in addition to this, they had to bring their supplies over 200 miles from Cue, or over 400 miles from Coolgardie. Some of the stages on these treks were from 50 to 80 miles without water.

By the middle of 1896, business people began establishing stores at the various localities, and supplies became more plentiful than in the past. By 1898 when the town had a population of over 200, there were two hotels, four stores, several private houses and a butcher's shop run by Messrs. Taylor & Connor.

Throughout the history of Wiluna, gold mining was dominated by the expansion and working of the Wiluna Gold Mine Ltd. The first large nugget found was discovered on Martin's Patch. Later to become the site of the Wiluna Gold Mine power house. During its life time, the Wiluna Gold Mine changed hands twice. The mine began in 1902 and continued till 1914 under the name of Gwalia Consolidated Ltd. From 1914 to 1924 it was known as the Western Machining Company Ltd. From 1924 to its close in 1950, it was called the Wiluna Gold Mine Ltd.

The Gwalia Consolidated Ltd. Was developed and financed by an English company, and extensive mining operations were carried out until 1910, when very complex ore, requiring elaborate and expensive treatment, was encountered.

In August 1910 a telegram was received from England with instructions to close the mine on the spot. The men were paid off, and the ore left in the bins. World War 1 prevented any further development. Up to this period 240,000 tons of ore had been treated, from which 85,000 fine ounces of gold were extracted.

In 1914, the lease was taken over by Mr. George Dawson, who re-names it the Western Machining Co. Ltd. During this period 69,500 tons of ore were treated, from which 33,200 fine ounces of gold were extracted.

Mr Dawson is probably remembered for his novel solution to a difficult transport problem. At that particular time, the ore had to be carried three miles from the mine itself to the State Battery in the township. Labour was very scarce, so Mr Dawson bought a string of horses and drays,

“filled each dray with ore and sent it off along the track to the battery with no more than an encouraging word to the sagacious horse and a gentle pat on the rump. There were no drivers. On arrival at the battery, the load was emptied and the horses sent on the return by the other loop of the track”.

When the mine closed down in 1924, Mr. Claude de Bernales bought the assets,. With English capital a syndicate was formed to test the property. Mr de Bernales floated a company which he called the Wiluna Gold Corporation, and he was able to raise 1 million pounds. The Wiluna Gold Mine Ltd was to operate the mine. In 1925 diamond drillers arrived to take samples and to make report and upon their recommendation the company went ahead, especially as a new oil flotation method seemed to make possible the treatment of the complex ore. By 1931 the plant was in full operation. As a result of the report written by Mr. H.E. Vail, the government introduced a bill authorising the construction of a railway to Wiluna from Meekatharra , thus bringing the mine into communication with the port of Geraldton.

During the period, from 1924 to 1950 the Wiluna Gold Mine Ltd, treated 7,687,196 tons of ore, from which 1,467,665 fine ounces of gold were produced. This represents 40.9 tons of gold. When the Wiluna Gold Mine Ltd. Was at its peak in 1937-38 it employed 1,028 men. It was equipped with machinery valued at 1 ¼ millions pounds, and was one of the largest producing mines in the state.

In 1939 the ore not only contained gold, but arsenic, antimony, copper, silver and nickel. In the eight years ending May 1939, the Wiluna Gold Mine produced 20,000 tons of arsenic. When Japan entered the war, she was so interested in the arsenic that Wiluna was listed as the no. 1 target in WA. It is believed to have been reported over Japanese radio that Wiluna has been bombed by Japanese planes. From 1932 to 1949, 36,673 tons of arsenic were produced. This was purchased by the Melbourne company of A. Victor Leggo, at a cost of 747,181 pounds. When the war began in 1939 the men working the arsenic treatment plant were manpowered to continue the treatment. The men were not happy with the arrangements, and took on a ‘go slow’ attitude. So effective were they that the production dwindled almost to nothing. Silver produced from the ore totalled 10,049.46 fine ounces.

It would be impossible to close a discussion on gold mining at Wiluna without further mentioning Claude de Bernales. The first major flotation with which de Bernales was connected was the Wiluna Gold Corporation Ltd in 1926. This was the prelude to a revival in gold mining in which de Bernales decided to take a very active part. In 1929-30 he launched a gold bonus campaign. It was quite obvious however, that from this venture de Bernales hoped to emerge a wealthy man. This was regarded by most of the population as a just reward for a man who was giving such a boost the gold industry, and hope of employment for thousands. Everything went as planned until the Federal Government decided to grant a bounty, but scarcely had the proclamation of the Act been made when Australia adjusted its rate of exchange of sterling and gold rose above the price provided by the new legislation. But de Bernales’s enthusiasm had already stated the revival which did not flag until the outbreak of war in 1939.

A great deal of the ore from the Moonlight, Bulletin and Happy Jack mines was treated at the Wiluna Gold Mine, as a rail track was built to each of these mines.

In 17 years, the Wiluna Gold Mine produced 11 million pounds worth of gold. In 1947, when the mine closed down because of decreasing values in its load formation, a huge ore dump, containing some 7 million tons of sand from which no practicable method of extracting gold has been found was left. This ore is estimated to contain approximately 1-1½ million pounds of gold.



## A few historical photographs of Wiluna Gold Mine

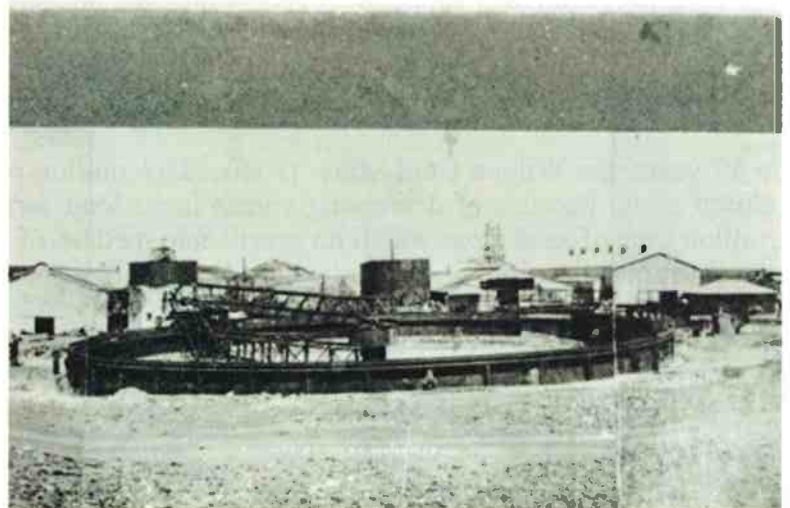


Team of Donkeys pulling wagon loaded with steam boiler for Wiluna Gold mine 1913



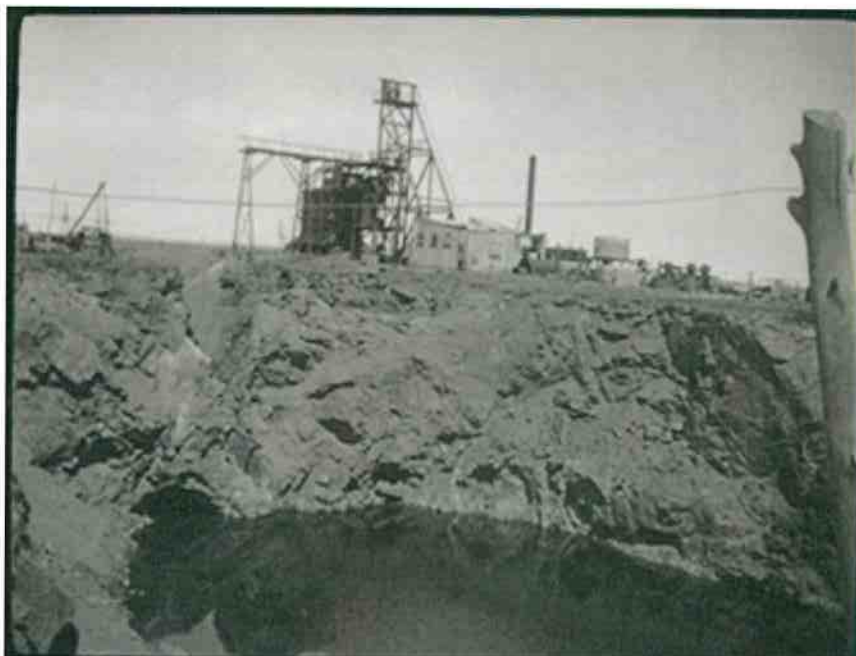
Single Men's Quarters

Wiluna Gold Mine  
March 1935





Aerial photograph of  
Wiluna Gold Mine  
Circa 1938



Violet Gold Mine  
1922



Open Cut  
Wiluna Gold Mine  
March 1935



Wiluna Gold Mine  
March 1935

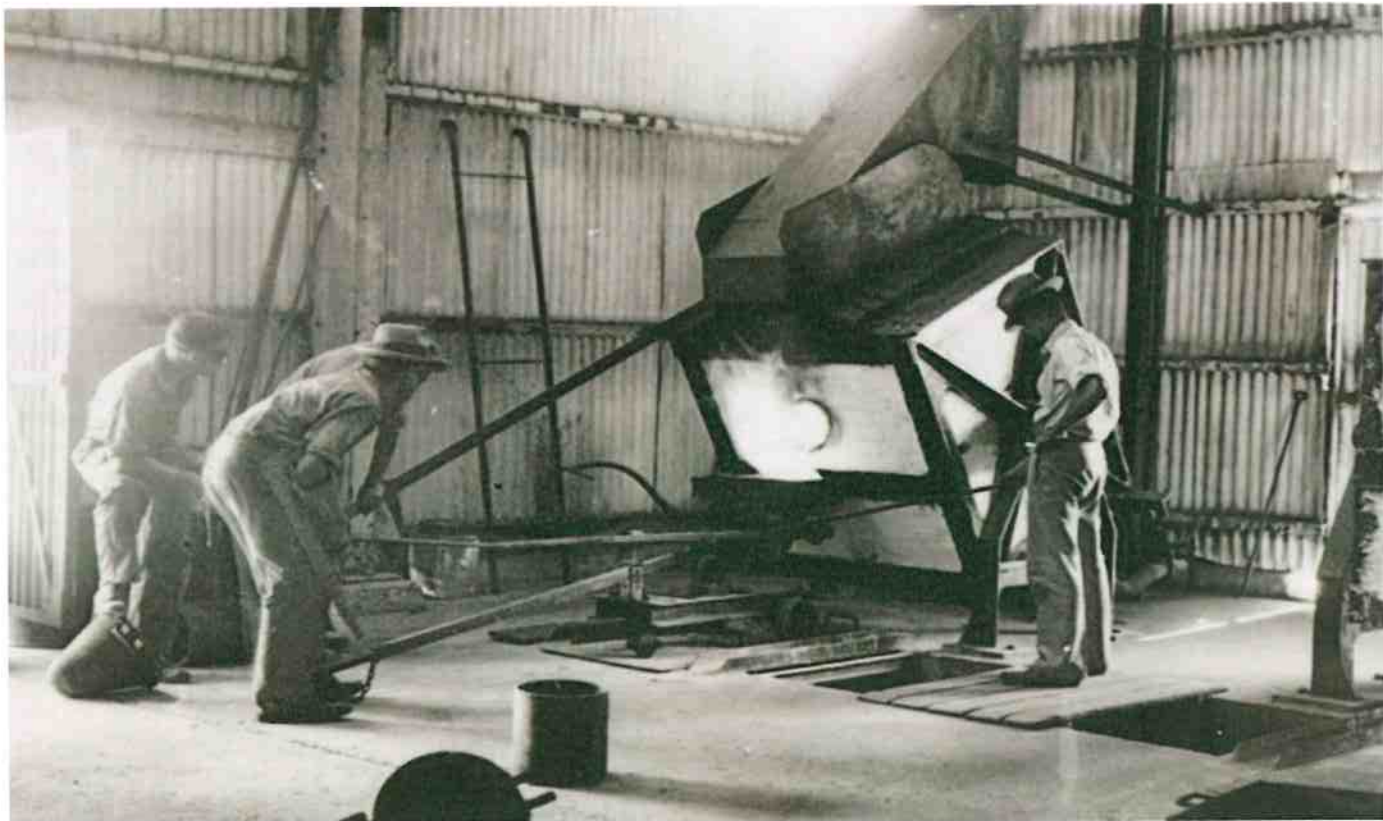
Wiluna Gold Mine  
March 1935



Panoramas of Wiluna Gold Mine, November 1930







Pouring the Gold, March 1935



Weighing the Gold, March 1935





## Shire President's Report

**Shire OF  
Wiluna**



Council have just recently gone through a recruitment process for the position of CEO and have appointed Colin Bastow .

I have been invited to participate in the Midwest Strategic Infrastructure Group and Transport steering committee. I have attended 3 meetings in Geraldton over the past 12 months. The Goldfields Highway has been elevated to #2 position of priority for the region and the Murchison Rail Project which includes securing the historic rail corridor from Mullewa, Mt Magnet, Meeka and Wiluna. If this rail link could attract private and Government investment it would create a viable means of getting the stranded Wiluna and Weld Range iron ore deposit to the port of Geraldton. This would open up many opportunities for Wiluna and the Murchison region.

There are talks going on with potential investors who may redevelop Desert Farm and if so , this will create a huge change for Wiluna, both for business development and employment.

In June myself, Cr Graham Harris and Acting CEO Colin Bastow attended the Developing Northern Australia Conference in Cairns . Wiluna still needs to clarify its position in Northern Australia, and hopefully there will be some tangible benefits to flow from that inclusion.

On the way back we stopped in Canberra and met with some State and Federal MPs and Senators, again bringing Wiluna issues to the fore.

Early in July I went on a road inspection and covered about 1200 km of the Shire road system. It has become evident to me there are 100s of kms of reconstruction needed to bring our road system up to an acceptable standard . Hopefully this will all be identified and captured in a 5-10 year forward Capital works programme.

Early August was spent in Perth at Local Government week of which a lot of the time was spent at meetings for various issues .

Council recently adopted the 17/18 budget of which there is substantial capital works expenditure . I am hoping that this time the budget will be delivered and everyone should see some real progress in making the town look better, roadworks, Club Hotel refurbishment- caravan park to name a few.

Council recently supported the school with funding to appoint a coordinator to run the (old Tafe) training centre. I believe this is having good results with good attendance and outcomes.

The recent State budget was extremely disappointing, particularly with the withdrawal of the funding to complete Goldfields Highway. This is now the 3<sup>rd</sup> time funding for completion of this important link has been politicised and Wiluna and the region have been sacrificed.

There is still ongoing discussion and lobbying to keep the funding and completion on the political radar. There is potentially millions of dollars of investment that can happen for Wiluna once this Highway is sealed, increase tourism and employment opportunity as well as make living and operating in the region safer and more efficient.

I have had numerous discussions with the media and particularly ABC radio who have been very supportive of our cause, particularly with the Goldfields Highway.

These are just some of the things that have been on my list over the past 4 months . There is certainly never a dull moment.

Council Elections are just a few weeks away and I urge everyone to cast your vote so you have a Council that will deliver for you .

I wish all candidates the best of luck

# Tjukurba ART GALLERY



Artists, the gallery is open and waiting for you!  
Paints and canvas available



**Shire OF  
Wiluna**



Just a reminder that rates are due  
by 6th October 2017.  
There is an option to pay by  
instalments.  
Late payments will incur interest  
fees and be referred to our debt  
collectors.





## Ngangganawili Aboriginal Health Service

Events Calendar » Ngangganawili Aboriginal Health Service

Page 2 of 3

Select Date:  Year:

October 2017

MON	TUE	WED	THU	FRI	SAT	SUN
25	26 Dietitian	27	28	29	30	1
2	3 Optometry	4 Optometry	5 Optometry	6	7	8
9 Podiatrist	10	11	12	13	14	15
16	17	18	19	20	21	22
23 Dietitian	24	25	26	27	28	29
30 RFDS Dentist	31 ENT RFDS Dentist	1 RFDS Dentist	2 RFDS Dentist	3 RFDS Dentist	4	



# Wiluna Community Pool

## Operating Hours

From the third week of October until 30 March of the following year during the school Terms

Monday, Tuesday, Thursday & Friday - 6.00 am to 7.00 am; 10.00 am to 12 noon and 2:00 pm to 7:00 pm

Weekends and Public Holidays - 10:00 am to 12 noon and 1.30 pm to 7:00 pm

School Holiday Weekdays - 6.00 am to 7.00 am; 10.00 am to 12 noon and 1.30 pm to 7:00 pm





AU 29748  
EC 8544

## **“Service is our Strength”**

**Specialists in Domestic, Commercial, Industrial & Mining  
Electrical Construction and Maintenance such as:**

- Asset Management/Maintenance
- All types of testing and commissioning
  - Area Floodlighting
  - Telecommunications
- Lighting and power systems
- Airconditioning/Refrigeration

**7 day 24 hour service for Domestic, Commercial & Industrial**

**Phone: 0427 666 388**

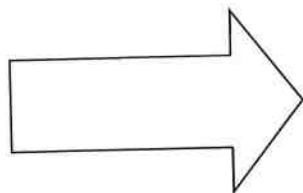
**Email: [wiluna@eliteec.com.au](mailto:wiluna@eliteec.com.au)**

**20 Lennon Street, Wiluna**

# Sudoku

Sudoku, is a logic-based, combinatorial number-placement puzzle. The objective is to fill a 9×9 grid with digits so that each column, each row, and each of the nine 3×3 subgrids that compose the grid contains all of the digits from 1 to 9. The puzzle setter provides a partially completed grid, which for a well-posed puzzle has a unique solution.

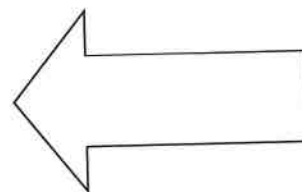
No. 1  
Easy



		5	9			4	7	6
	2		5	7				
					8			
		2			6		1	7
5					9	3		2
					1			4
						5		
				6	4		9	
	8	9	3					

					2		1	
			6	4				
1				3			5	7
6			4	1	9			8
					3			
	5			2		7		
	4		1					
9					8			
								3

No 2  
Hard



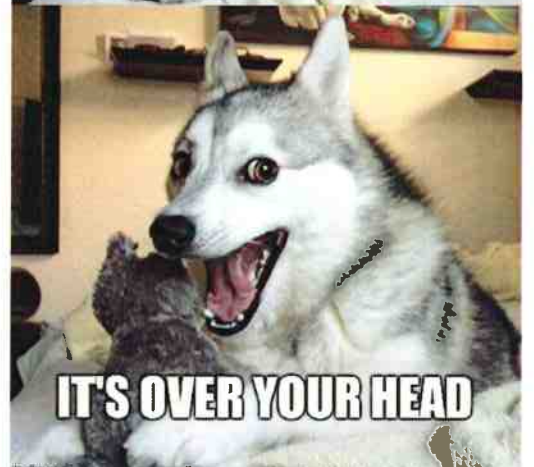


# Joke Page

The most wasted  
of all days  
is the one  
without  
**Laughter**  
-E.E.Cummings

**LIFE IS  
BETTER  
WHEN  
YOU'RE  
LAUGHING.**

IF YOU  
**LAUGH**  
A LOT,  
WHEN YOU GET OLDER  
YOUR WRINKLES WILL BE  
IN THE RIGHT PLACES.



# Kid's Pages

## Join the Dots





## Sudoku Answers

8	3	5	9	1	2	4	7	6
4	2	6	5	7	3	1	8	9
9	1	7	6	4	8	2	3	5
3	9	2	4	5	6	8	1	7
5	4	1	7	8	9	3	6	2
6	7	8	2	3	1	9	5	4
1	6	4	8	9	7	5	2	3
2	5	3	1	6	4	7	9	8
7	8	9	3	2	5	6	4	1

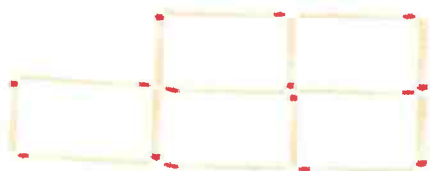
No 1

4	3	9	5	8	7	2	6	1
2	7	5	6	4	1	3	8	9
1	8	6	9	3	2	4	5	7
6	2	7	4	1	9	5	3	8
8	9	4	7	5	3	6	1	2
3	5	1	8	2	6	7	9	4
7	4	3	1	9	5	8	2	6
9	6	2	3	7	8	1	4	5
5	1	8	2	6	4	9	7	3

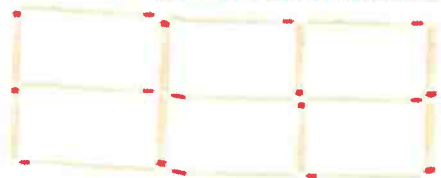
No 2

## Matchstick Puzzles - #1

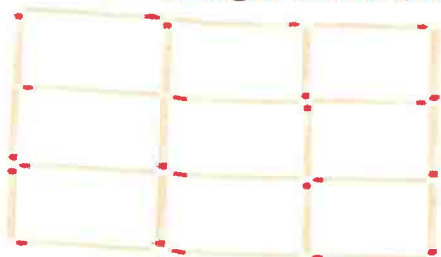
1. Leave just three squares by removing three matchsticks.



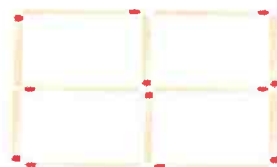
2. Leave just three squares by removing five matchsticks.



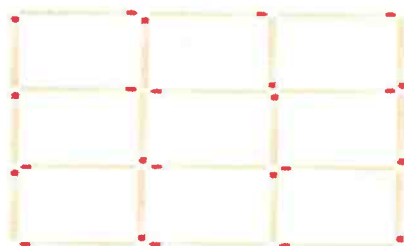
3. Leave just two squares by removing eight matchsticks.



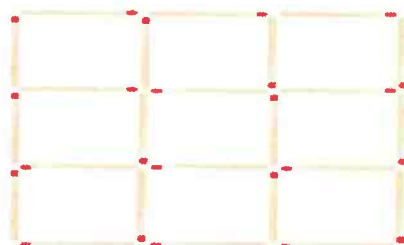
4. Leave just two squares by removing two matchsticks.



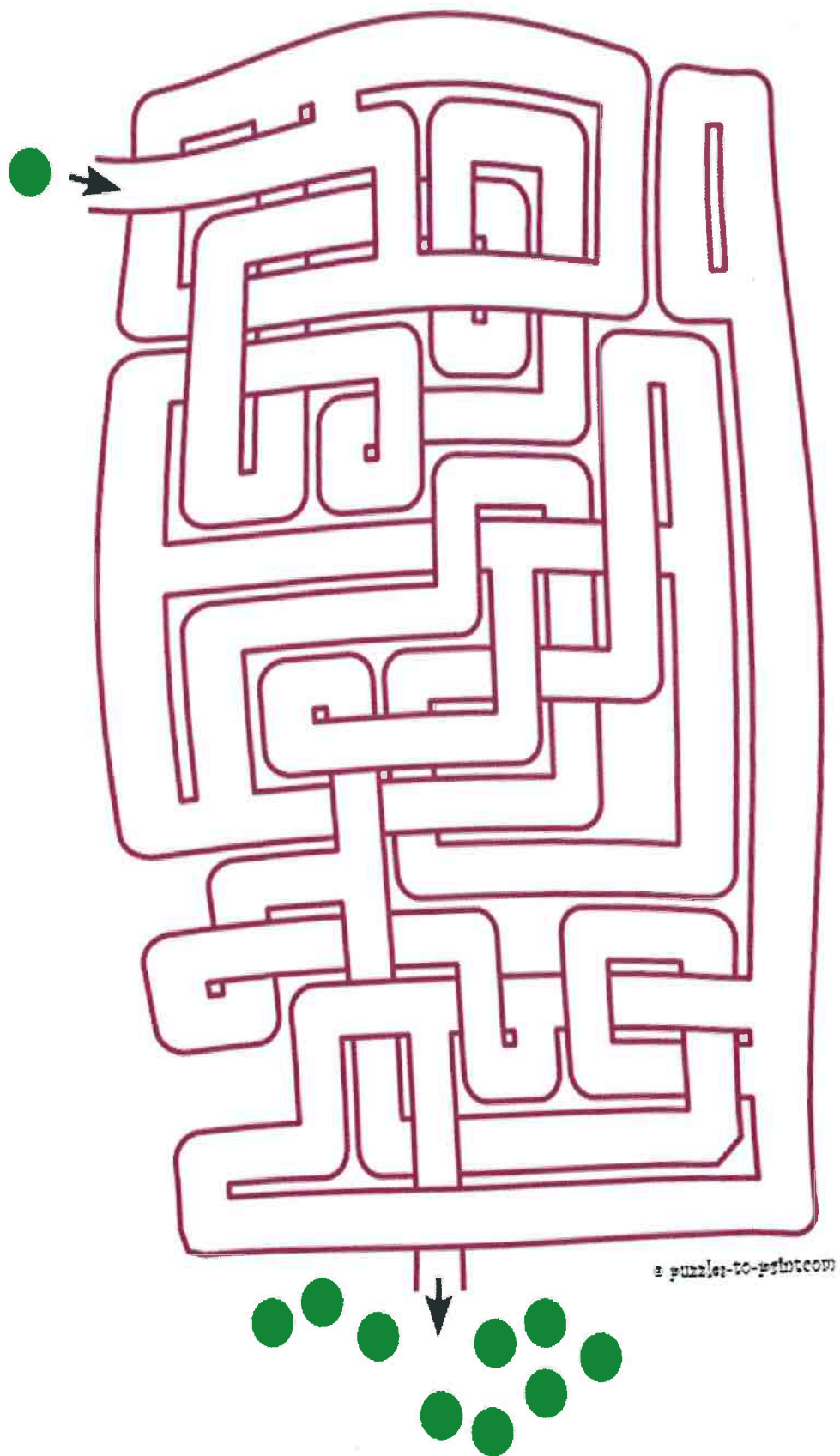
5. Leave just six squares by removing eight matchsticks.



6. Leave just three squares by removing six matchsticks.







a.puzzles-to-print.com

Find the shortest path through the maze for the green marble to join the others on the bottom.



## YOUR AD HERE

Please contact Tracey  
([agm@wiluna.wa.gov.au](mailto:agm@wiluna.wa.gov.au)) or Katrina  
([admin@wiluna.wa.gov.au](mailto:admin@wiluna.wa.gov.au))  
Or ring 998 1 8000 if you wish to  
put in an ad

## Matchstick Puzzles - #1

### SOLUTIONS

1. Leave just three squares by removing three matchsticks.



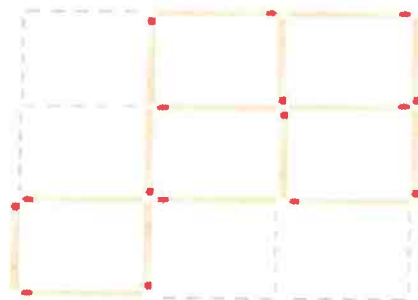
4. Leave just two squares by removing two matchsticks.



2. Leave just three squares by removing five matchsticks.



5. Leave just six squares by removing eight matchsticks.



3. Leave just two squares by removing eight matchsticks.



6. Leave just three squares by removing six matchsticks.

