

# **JANUARY 2019 NEWSLETTER**

Published 11/1/2019

## *The Wiluna Wire*





## EVERYONE IS WELCOME!

Hello and welcome to the January edition of **The Wiluna Wire**. In this edition we have submissions from a number of Wiluna agencies and individuals. We would love to make the **Wiluna Wire** into an informative, interesting and entertaining newsletter, that includes submissions from all sections and ages of the Wiluna community. The newsletter will only be as good as the submissions we receive!

If you have any feedback, suggestions and or submissions, please come into the Shire Administration Centre on Wotton Street and have a chat. Contact can also be made by phone—9981 8000 or email at—[aa@wiluna.wa.gov.au](mailto:aa@wiluna.wa.gov.au) with “The Wiluna Wire” in the subject line.

Regards

The Administration Team

THE CANNING-GUNBARREL DISCOVERY  
CENTRE IS NOW CLOSED TO THE PUBLIC  
AS OF THE 1ST OCTOBER 2018.  
HOWEVER IF YOU WISH TO VISIT, PLEASE  
MAKE AN APPOINTMENT FOR A PRIVATE  
VIEWING.

TJUKURBA ART CENTRE REMAINS OPEN  
TO THE PUBLIC AND ARTIST'S OVER THIS  
PERIOD



## **ORDINARY COUNCIL MEETING**

### **DATES 2019**

<b>Date</b>	<b>Venue</b>	<b>Starting Time</b>
27 February 2019	O'Shaughnessy Council Chambers	9am
27 March 2019	O'Shaughnessy Council Chambers	9am
24 April 2019	O'Shaughnessy Council Chambers	9am
22 May 2019	O'Shaughnessy Council Chambers	9am
26 June 2019	O'Shaughnessy Council Chambers	9am
24 July 2019	O'Shaughnessy Council Chambers	9am
28 August 2019	O'Shaughnessy Council Chambers	9am
25 September 2019	O'Shaughnessy Council Chambers	9am
23 October 2019	O'Shaughnessy Council Chambers	9am
27 November 2019	O'Shaughnessy Council Chambers	9am
18 December 2019	O'Shaughnessy Council Chambers	9am



## CEO's Report

Welcome to the first edition of the Wiluna Wire for 2019. I hope everyone had a merry Christmas and a Happy New Year?

Fortunately, the Shire was able to reopen the Wiluna Public Swimming Pool over the Christmas and New Year Break. It is extremely difficult to recruit the appropriately qualified and experienced Swimming Pool Manager at this time of the year, as they are already recruited at various pools around the State for the season. The Shire can only open the Wiluna Public Swimming Pool to the public if there is a suitability qualified person working at the pool. Belgravia Leisure, who operates the Pool on the Shire's behalf, has already started their search for a replacement Pool Manager for the rest of this season. A significant reason why the previous Pool Manager left Wiluna was due to the behaviour of some people towards him as a result of him enforcing proper safety standards and pool rules. To ensure there is no repeat of this type of behaviour towards the new Pool Manager, anyone who disrespects the Pool Manager may find themselves banned from using the pool.

Council has approved the replacement of its radio rebroadcasting equipment as the current equipment is starting to show its age and has become very unreliable recently. The replacement of the radio rebroadcasting equipment is expected to take place in the next month or so. The new equipment is of commercial grade which should result in a better user experience once it has been installed. The Shire will likely be required to change the frequencies of Red FM and Triple J. Further information about the new frequencies will be made available shortly.

The Shire has recently purchased a new road sweeper and a second hand rubbish truck. You should see this new plant around Wiluna in the coming months.

Regards

Colin Bastow

CEO



# Christmas Lights Winners



**1st Prize—Sione KuliKefu \$250 Wiluna Traders Voucher**

**2nd Prize—Jason Barnett \$200 Wiluna Traders Voucher**

**3rd Prize—Yvonne Ashwin \$100 Wiluna Traders Voucher**

**Due to an impressive display of lights around town the Shire has also decided to give out 3 encouragement awards of a \$50 Wiluna Traders Voucher to the following people -:**

**Briony Jackman, Robbie Wongawol and Patricia Ashwin.**

**Please come into Reception at the Administration Office to pick up your voucher.**

**Thanks go out to everyone who participated.**

# Letter to Santa Winner



**The winner of the letter to Santa is Azonia Patch.**

**Hope you got what you asked for, but for having the best letter you get a \$10 voucher to spend at Wiluna Traders.**

**We received quite a few letters and Azonia's letter was picked out. Well done Azonia.**

**If you come into the Reception at the Shire Administration you can pick up your voucher.**

**Congratulations.**

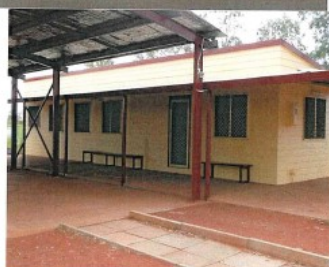
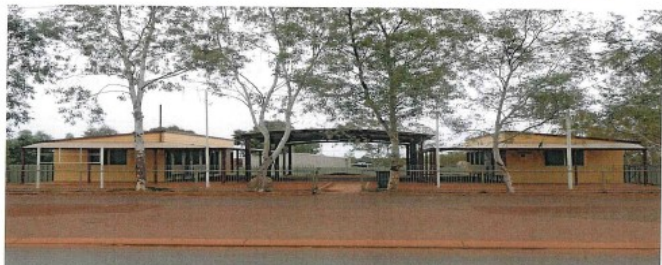


# For Hire

**Shire OF  
Wiluna**



## Enterprise Centre—Hot Shops



### Hot Shop Available in Wiluna

The Shire has set aside one of the buildings at the Enterprise Centre (where Wirranda Foundation is located) to be used as a temporary (hot) shop. The reason for this is to encourage businesses to come or be started in Wiluna, even if this is for a short time such as a day or two. For further information on how to hire the hot office, please contact the Shire on (08) 9981 8000.

(This is a smoke free environment)

## Kitchen & Dining Room



### Fees & Charges

Hire Period 1-4 hrs (day time only)  
Community Groups (no alcohol) \$11  
Schools/Govt Org or Depts (no alcohol) \$22  
Corporate/Private function (no alcohol) \$27.50  
Any of the above but WITH alcohol \$60.50

Hire period 4-8 hours (day time only)  
Community Groups (no alcohol) \$27.50  
Schools/Govt Org or Depts (no alcohol) \$44  
Corporate/Private functions (no alcohol) \$55  
Any of the above but WITH alcohol \$82.50

Hire period 24 hrs and/or Night Time functions  
Community Groups (no alcohol) \$44  
Schools/Govt Org or Depts (no alcohol) \$60.50  
Corporate/Private functions (no alcohol) \$77  
Any of the above but WITH alcohol \$110

Above prices are inclusive of GST

### Bond for all hire periods and hire types

No alcohol \$200  
With alcohol (low risk events) \$500  
With alcohol (high risk events) \$1,000

Bonds are GST exempt  
CEO to determine the risk level  
(This is a smoke free environment)

## Moonlight Hall



### Fees & Charges

Hire Period 1-4 hrs (day time only)  
Community Groups (no alcohol) \$22  
Schools/Govt Org or Depts (no alcohol) \$44  
Corporate/Private function (no alcohol) \$55  
Any of the above but WITH alcohol \$115.50

Hire period 4-8 hours (day time only)  
Community Groups (no alcohol) \$55  
Schools/Govt Org or Depts (no alcohol) \$82.50  
Corporate/Private functions (no alcohol) \$110  
Any of the above but WITH alcohol \$165

Hire period 24 hrs and/or Night Time functions  
Community Groups (no alcohol) \$82.50  
Schools/Govt Org or Depts (no alcohol) \$121  
Corporate/Private functions (no alcohol) \$154  
Any of the above but WITH alcohol \$220

Above prices are inclusive of GST

### Bond for all hire periods and hire types

No alcohol \$300  
With alcohol (low risk events) \$500  
With alcohol (high risk events) \$2,000  
(This is a smoke free environment)

Bonds are GST exempt



## Hot Offices



### Fees & Charges

First Day \$55

2nd to 5th Day per day \$13.75

6th Day or more per day \$22

Please contact Shire staff for more details and availability.

(Prices inclusive of GST)

(The Shire Administration is a smoke free environment)





# Blackham Resources' agreement over Wiluna West likely to boost gold free milling inventory

**Blackham Resources Ltd (ASX:BLK)** has signed an agreement with **GWR Group Ltd (ASX:GWR)** covering that company's 254,000-ounce Wiluna West Gold Project.

The agreement is for the exploration, development, mining and processing of gold resources from the project, which is 40 kilometres by road from Blackham's Wiluna treatment plant.

It provides Blackham with access to additional free milling inventory for the operating plant at the Wiluna-Matilda Gold Operation.

Blackham's managing director Bryan Dixon said: "This GWR agreement represents an opportunity to partner with an emerging junior in the Wiluna district for the benefit of both parties.

"It is consistent with Blackham's strategy of strengthening and lengthening its free milling reserves within trucking distance of its Wiluna gold plant.

"The agreement applies to 25-kilometres of prospective strike of free milling mineralisation with existing resources that has had limited drilling over the past 15 years."

This binding heads of agreement provides for the establishment of a mineral processing joint venture (JV) which will see Blackham with a 65% share of profits and GWR with 35%.

The JV agreement is planned to be executed next month and will define the terms outlined in the heads of agreement.

Under these terms, GWR will be responsible for drilling the separate gold deposits to JORC 2012-compliant level with a minimum indicated category at their cost.

GWR will also be responsible for initial metallurgical test work and approvals associated with the deposits.

Blackham will be responsible for feasibility studies to determine the economic potential of the deposits.

Upon completion of a positive feasibility study, Blackham can elect to schedule the start of mining and processing of the reserves, which includes transportation.

Blackham will manage the JV, which includes the pre-development/mine set-up, mining operations and processing the gold ore from Wiluna West through the Wiluna plant.

Once mining starts all costs will be shared in proportion to the JV ownership with the bullion produced shared under the same ratio.

Initial focus at Wiluna West will be on the Golden Monarch and Eagle/Emu deposits with approval processes well advanced and mining potentially beginning in mid-2019.

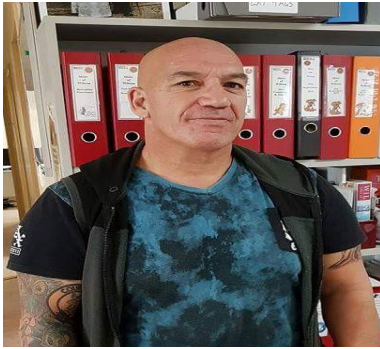
GWR has recently completed additional resource definition drilling and is undertaking the necessary ancillary studies to facilitate approvals.

Blackham's Wiluna-Matilda operation is in Australia's largest gold belt which stretches from Norseman through Kalgoorlie to Wiluna.

The operation now includes resources of 96 million tonnes at 2.2 g/t for 6.7 million ounces, all within 20-kilometres of the central processing facility.

Blackham has consolidated the entire Wiluna Goldfield within a more than 1,440 square kilometre tenure package which has historically produced in excess of 4.4 million ounces over a 120-year mining history.





# Recreation & Leisure Coordinator News



**Australia Day Pool Party  
Saturday 26 Jan 2-6pm  
Fun and games, prizes and lots,  
lots more.  
Come on down and join the  
party. Please see further in the  
newsletter for more info.**



**Circuit Training is a fast paced  
class in which you spend a short  
amount of time on each  
exercise. It targets strength  
building or muscular endurance.**

**Sundays 5-6pm  
Mondays 6-7pm  
Wednesdays 6-7pm**

**Come and see the new Memory Wall  
at the Rec. Centre. All the old  
photos have been laminated and are  
hanging up. Why not come down  
and see if you are there, remind  
ourselves of how we were in our  
youth!**



**We have some fabulous movies  
lined up for January.  
Friday 11 Jan—Oddball (PG)  
Friday 18 Jan—Dog's Purpose (PG)  
Friday 25 Jan—Jungle Bunch (G)  
PG rated movies = parental  
guidance suggested, some material  
may not be suitable for children.  
Please see further in the newsletter  
for more info on these movies.**



# Recreation Centre Activities for the Month

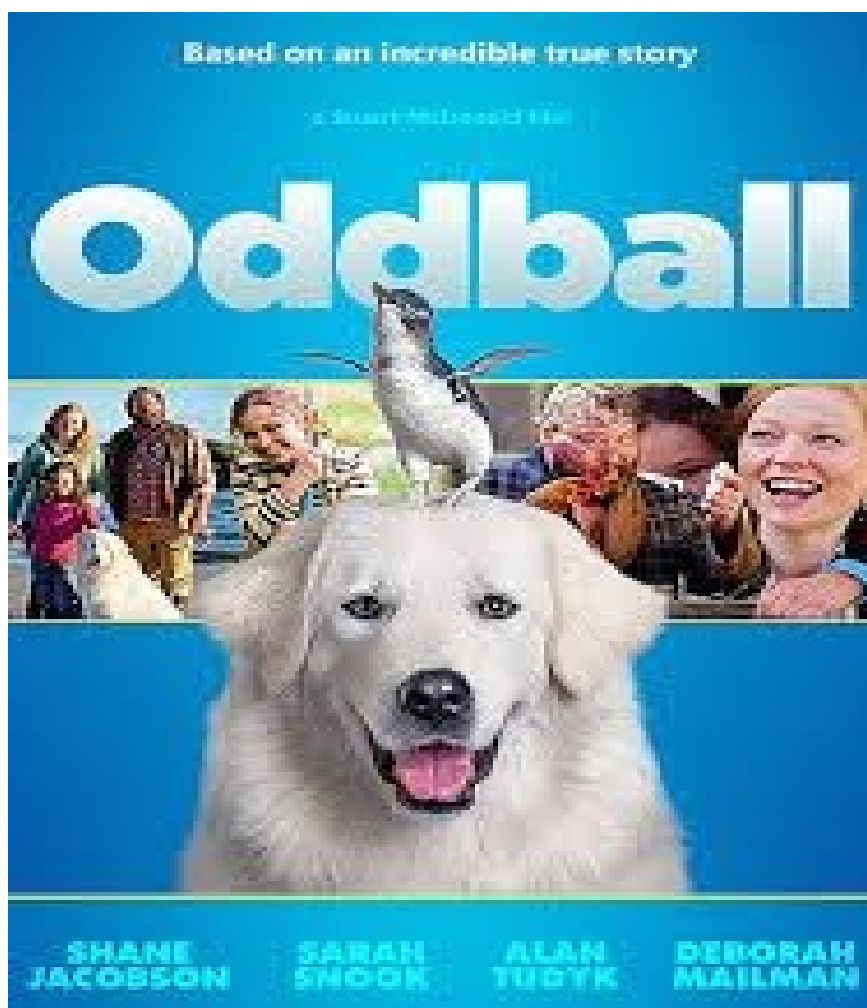
January 2019						
◀ December						February ▶
Sun	Mon	Tue	Wed	Thu	Fri	Sat
		<b>1</b> New Years Day Public Holiday	<b>2</b> DIN 9- 12 ART 12-18 Painting Pool 1-30/ 4-30 DIN 4-30/ 7PM	<b>3</b> DIN 9- 12 ART 12-18 Painting Pool 1-30/ 4-30 DIN 4-30/ 7PM	<b>4</b> DIN 9- 12 ART 12-18 Painting Pool 1-30/ 4-30 Afternoon office time	<b>5</b>
<b>6</b>	<b>7</b> DIN 9-12PM ART 12-18 CLAY OR POSTER Pool 1-30/ 4-30 DIN 4-30/ 7PM 6-7PM CIRCUIT	<b>8</b> DIN 9-12PM ART 12-18 CLAY OR POSTERS Pool 1-30/ 4-30 DIN 4-30/ 7PM	<b>9</b> DIN 9-12PM ART 12-18 CLAY OR POSTER Pool 1-30/ 4-30 DIN 4-30/ 7PM 6-7PM CIRCUIT	<b>10</b> DIN 9- 12 ART 12-18 CLAY OR POSTER Pool 1-30/ 4-30 DIN 4-30/ 7PM	<b>11</b> DIN 9- 12 <b>MOVIE:</b> <b>ODD</b> <b>BALL:pg</b> Pool 1-30/ 4-30 Tamihana office	<b>12</b>
<b>13</b> CIRCUIT 5-6PM	<b>14</b> DIN 9- 12 ART 12-18 CLAY OR POSTER Pool 1-30/ 4-30 DIN 4-30/ 7PM 6-7PM CIRCUIT	<b>15</b> DIN 9- 12 ART 12-18 CLAY OR POSTER Pool 1-30/ 4-30 DIN 4-30/ 7PM	<b>16</b> DIN 9- 12 ART 12-18 CLAY OR POSTER Pool 1-30/ 4-30 DIN 4-30/ 7PM 6-7PM CIRCUIT	<b>17</b> DIN 9- 12 ART 12-18 CLAY OR POSTER Pool 1-30/ 4-30 DIN 4-30/ 7PM	<b>18</b> DIN 9-12 <b>MOVIE:</b> <b>DOG;S</b> <b>PURPOSE:PG</b> Pool 1-30/ 4-30 Tamihana office	<b>19</b>
<b>20</b> CIRCUIT 5-6PM	<b>21</b> DIN 9- 12 ART 12-18 Painting Pool 1-30/ 4-30 DIN 4-30/ 7PM 6-7PM CIRCUIT	<b>22</b> DIN 9- 12 ART 12-18 Painting Pool 1-30/ 4-30 DIN 4-30/ 7PM	<b>23</b> DIN 9- 12 ART 12-18 Painting Pool 1-30/ 4-30 DIN 4-30/ 7PM 6-7PM CIRCUIT	<b>24</b> DIN 9- 12 ART 12-18 Painting Pool 1-30/ 4-30 DIN 4-30/ 7PM	<b>25</b> DIN 9-12 <b>MOVIE:</b> <b>JUNGLE</b> <b>BUNCH: G</b> Pool 1-30/ 4-30 Tamihana office	<b>26</b> Austria Day SHIRE OF WILUNA COMMUNITY POOL PARTY 2PM TO 6PM
<b>27</b> CIRCUIT 5-6PM	<b>28</b> Australia Day Public Holiday	<b>29</b> DIN 9- 12 ART 12-18 Painting Pool 1-30/ 4-30 DIN 4-30/ 7PM	<b>30</b> DIN 9- 12 ART 12-18 Painting Pool 1-30/ 4-30 DIN 4-30/ 7PM 6-7PM CIRCUIT	<b>31</b> DIN 9- 12 ART 12-18 Painting Pool 1-30/ 4-30 DIN 4-30/ 7PM		



Friday 11 Jan



**The true story of an eccentric chicken farmer who, with the help of his granddaughter, trains his mischievous dog Oddball to protect a penguin sanctuary from fox attacks in an attempt to reunite his family and save their seaside town.**



Friday 18 Jan



**A devoted dog discovers the meaning of its own existence through the lives of the humans it teaches to laugh and love.**

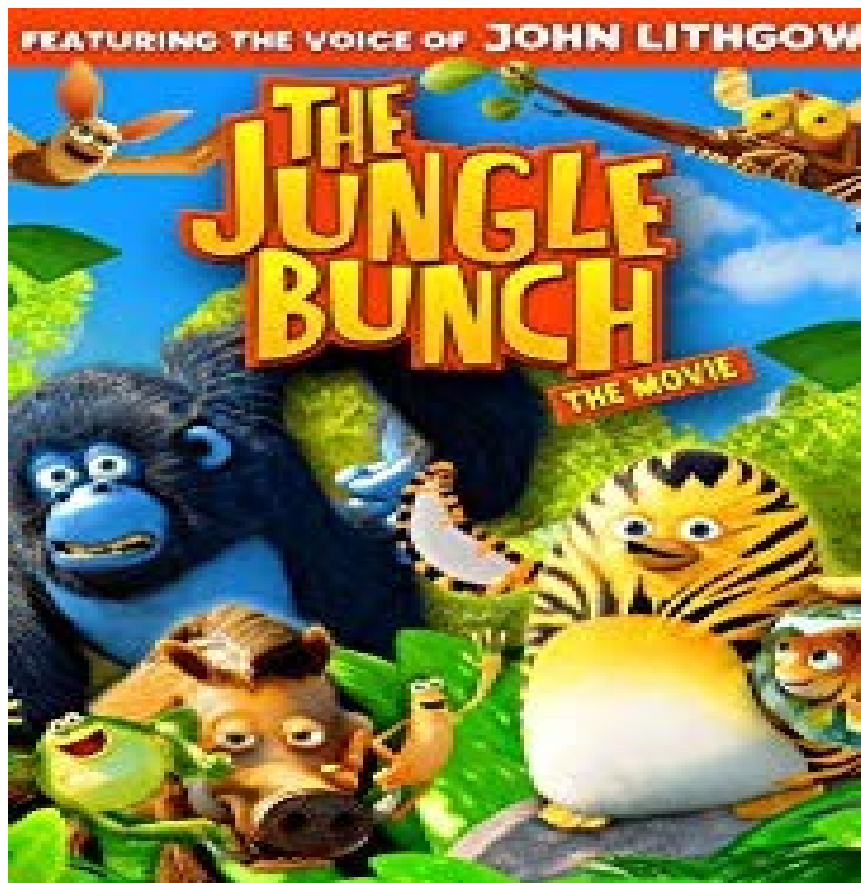
**Reincarnated as multiple canines over the course of five decades, the lovable pooch develops an unbreakable bond with a kindred spirit named Ethan. As the boy grows older and comes to a crossroad, the dog once again comes back into his life to remind him of his true self.**



Friday 25 Jan



**A penguin raised by tigers defends the jungle from an evil koala and an army of baboons with the help of his friends, the Jungle Bunch.**



# Australia Day Community Pool Party

Australia Day Community Pool Party

Saturday 26 January 2019 2-6pm

(please note the time, this is not the traditional Australia Day Breakfast)



**Obstacle Course for 3-5 year olds**

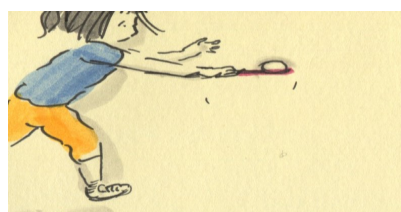


**Enter a quiz and you can win a prize**

**6—8 year olds 3pm**

**9—11 year olds 3.30pm**

**12—14 year olds 4pm**



**Egg and spoon race for little ones**

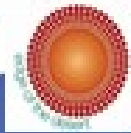


**Lolly Bags and icy poles for children who participate in organised activities**



**Community BBQ  
4.30pm**





# **TIDY GARDENS**

## **COMPETITION 2019**

**Win a Monthly Prize**

**This Prize will be offered to  
all Residents in Wiluna &  
Bondini**

**REMEMBER THE MOST  
IMPROVED GARDEN WILL  
WIN AN EXTRA PRIZE**

**CONTACT THE SHIRE FOR  
MORE INFORMATION  
9981 8000**



# **COUNCIL NOTICE** **SPECIAL COUNCIL MEETING**

**A SPECIAL COUNCIL MEETING WILL BE  
HELD ON**

**WEDNESDAY, 16 JANUARY 2019**  
**COMMENCING AT 9 AM**  
**TO DISCUSS THE TENDER FOR**  
**THE MAIN STREET REVITALISATION**

DAY	DATE	TIME	VENUE
Wednesday	16 January 2019	9am	O'Shaughnessy Council Chambers Wotton Street

**Colin Bastow**  
**Chief Executive Officer**

# Things to See and Do

## Wiluna Heritage Trail

There is an unusual, and genuinely fascinating, Heritage Trail which comprises a total of 30 place of interest. The way to make sense of it is to download the useful map of the town depicts the Northern and Southern Heritage Trail loops. It can be downloaded at [http://www.wiluna.wa.gov.au/Assets/Documents/Wiluna\\_Town\\_Map.pdf](http://www.wiluna.wa.gov.au/Assets/Documents/Wiluna_Town_Map.pdf).

Then download the 30 page *Wiluna Walk Trail* ([http://www.wiluna.wa.gov.au/Assets/Documents/Wiluna\\_Walk\\_Trail.pdf](http://www.wiluna.wa.gov.au/Assets/Documents/Wiluna_Walk_Trail.pdf))

This provides detailed information about all the places which once defined the town. There are lots of amusing stories about the “characters” who lived in the town.

## Northern Heritage Trail Loop

Many of the places mentioned on this 17 stop loop are no longer in existence but their stories, all told on the brochure, are a reminder of the vibrancy of Wiluna when it was a prosperous mining town. Still standing are the following:

- 8. The Club Hotel (now the Wiluna Shire Administration Offices)
- 14. Methodist Church (now the Seventh Day Adventist Church)

## Southern Heritage Trail Loop

Like the Northern Heritage Trail, the Southern Heritage Trail mentions many buildings which are no longer standing. The places of interest which are still standing include:

- 22. Wiluna Discovery Centre (Former Hospital)
- 25. Wiluna Remote Community School

Wiluna Remote Community School is one of the most modern building in the town, an interesting example of the power of politics. When the Governor General inspected the local school in 2006 he was horrified by its substandard structure and facilities. As a result a new school was built. As the Heritage Trail explains: *“This bright modern and funky-looking school is a direct result of the furore that erupted in 2006 after the Governor-General’s visit to the “old” school near the hotel. Driven by a real sense of urgency an early decision was taken to use transportable buildings—but the way these have been integrated into this site is both unique and highly creative. The 13 modules were arranged into zones to serve particular functions (administration, pre-primary, library etc), and these zones were linked by a landscaped inner quadrangle. The integration of elevated timber decks and the eye-catching parasol roofs created a strong sense of permanency around the whole complex. These raised roof structures also help reduce the impact of extreme summer heat. Early involvement of the local community led to the bright art panels that protect the school from prevailing winds—and create such a strong street impact. The theme for these panels is the Canning Stock Route, and colours and patterns used have formed the basis of recent interpretative work around the town. The new school was handed over to the community in November 2007.”*

## Other Attractions in the Area

Canning Stock Route—1500km from Wiluna north to Halls Creek (or vice versa) through the Great Sandy Desert and Gibson Desert and is rugged enough to test the mettle of any 4WD vehicle and its occupants. It is essential to be totally self-sufficient for the entire journey.

Gunbarrel Highway—East from Wiluna traversing the Little Sandy Desert and the Gibson Desert for 1420km to Uluru and Yulara. It has a number of settlements along the way and it requires permission to access protected Aboriginal Lands.

# History

- ⇒ Prior to the arrival of Europeans the Ngangganawili Aboriginal people lived and moved through the area.
- ⇒ The first European into the area was the explorer, John Forrest, who, in 1875, established a food and supplies depot at Weld Spring 230km north of the present townsite, and built a small fort.
- ⇒ Gold was first discovered by William Earl and John Connelley in 1891 and, due to a reliable water supply, the town prospered.
- ⇒ In 1900 author May Vivienne noted that the town had “three hotels and stores” and that watermelons, tomatoes and fresh water helped relieve the awful desert temperatures.
- ⇒ Wiluna’s first Police Station opened in 1901.
- ⇒ The Canning Stock Route through the Great Sandy Desert and Gibson Desert was surveyed by Alfred Wernam Canning in 1906-7. He left Wiluna in May, 1906 with 8 men , 23 camels and 2 ponies.
- ⇒ A total of 52 wells (each about 30km apart) were dug in 1908-10.
- ⇒ In the 1930s Perth entrepreneur, Claude de Bernales, developed a successful extraction method and his Wiluna Gold Mines Ltd saw the town boom with the population reaching 9000.
- ⇒ The first issue of the Wiluna Miner was published in 1931. A town swimming club was formed that year.
- ⇒ The railway from Meekatharra reached the town in 1932.
- ⇒ In 1933 the Canning Stock Route was revitalized.
- ⇒ The Commonwealth Bank opened in 1934. A Methodist Church was built in town that year.
- ⇒ In 1937 the School of Mines started offering night classes to the local miners.
- ⇒ By 1938 the town had nine policeman, a detective and a Sergeant in charge.
- ⇒ The last mob of cattle were taken down the Canning Stock Route in 1959.
- ⇒ The Weeloona Hotel was demolished in 1978.
- ⇒ In the 1980s the local Ngangganawili Community set up a citrus orchard and an emu farm.
- ⇒ In 2007 the town’s new school was opened.
- ⇒ In the summer of 2012/2013, dubbed the Angry Summer by the Climate Commission, the temperature in Wiluna reached a new recorded high of 48°C.





**Gateway To:** Australia's most  
Challenging Desert Tracks  
and Geo Destinations!!

Gunbarrel Laager  
Locked Bag 10  
Wiluna WA 6646

Ph: 08 9981 7161  
Mob: 0428 817 161

Email:

[Gunbarrel.laager@riverblueholdings.com.au](mailto:Gunbarrel.laager@riverblueholdings.com.au)

**DUE TO A RECENT  
ROBBERY, THE  
GUNBARREL LAAGER  
STORE IS NOW CLOSED  
TO THE PUBLIC.**



## Bush camps funded for better Indigenous health in Durack

10 January 2019

Well-known actor, television presenter and health advocate, Wajarri Yamatji man Ernie Dingo, who hails from Mullewa in the Durack electorate, will front a TV program *Camping on Country* that aims to address health and wellbeing challenges for Aboriginal and Torres Strait Islander men in a culturally safe way, thanks to a \$1 million grant.

Federal Member for Durack and Minister for the Environment Melissa Price said the Federal Government will provide \$1 million over two years to Ernie Dingo's TV media company BushTV Enterprises to deliver the program.

Announcing the funding on the Beedawong Meeting Place in Kings Park on Tuesday, Minister for Indigenous Health Ken Wyatt AM said the grant would ensure that Aboriginal and Torres Strait Islander men have a strong voice in health and wellbeing services in their communities.

"Respect for culture has a fundamental role in improving the health of our men, who currently have a life expectancy of 70 years, more than 10 years shorter than their non-Indigenous counterparts," he said.

Murchison Elder Alan Egan and Kununurra Elder Ted Carlton will join Ernie and a traditional healer as well as an Aboriginal male health worker at each camp.

Minister Price said she welcomed the funding and was pleased to see Elders given the opportunity to pass on their knowledge and stories to the younger generation with the assistance of high profile identity Ernie Dingo.

"The program puts culture and language at the centre of daily activities and also uses the expertise and knowledge of local men's groups, traditional owners and local Aboriginal organisations in Durack," she said.

"I'm pleased to acknowledge that Yamatji man Ernie Dingo - who hails from Mullewa in the Durack electorate - has developed the *Camping on Country* program with his BushTV partner Tom Hearn."

The funding will commission 20 campsites around the nation over the next two years.

"The first two camps will be rolled out in Durack, in the Kimberley and Mid West," Minister Price said.

*Camping on Country* is based on the premise that working with local men as the experts in their own health and community is critical in Closing the Gap in health equality.

Minister Wyatt said *Camping on Country* is about building the resilience of our men and our young boys.





# MELISSA PRICE MP

Federal Member for **Durack**



"The journey that they take through the program that Ernie has designed and is working through with community at the local level is one way that we can close the gap, and closing the gap has been a significant initiative of subsequent governments, and this will enable that to occur," he said.

Elder Ted Carlton from the Miriwoong and Gajerrong community in Kununurra said the camp was a very positive move.

"It's an incentive by our mob to work with our young people in the community, especially based around community health, Aboriginal health and so on," he said.

"I think it's about time our men in our community grab hold of the opportunity provided, and we'd like to thank the mob that's working with us and I think the Miriwoong Gajerrong mob will be living positively with the program into the future, and I think it's a good move and well supported by our mob as well."

Mid West Wadjarri country Elder Alan Egan agreed.

"I'm really happy to be here on this day to do what we want to do with the younger people that, you know, that are coming behind us and we want to do as much as possible," he said

Ernie Dingo said the first thing they've got to do is get healthy.

"On the inside, the mind, the body, and the soul is all there ready to go, once we get that strength and those men standing up in our community - men like Ted, for instance, and my brother Alan here - that'll make things a lot easier in a direction that there's a strength that grows from within the men when they have a chance to stand up in their rightful place in the community as leaders and elders of our community; we should listen to them," he said.

"We don't listen to them - we're going to lose a lot of beautiful stuff that we don't read in books because they don't teach it anymore."

The \$1 million funding will also support BushTV Enterprises to partner with a university and Primary Health Alliances to conduct research to track improvements in remote men's health and enhance health and wellbeing services.

A video message stick will be produced during each camp and made available to all levels of government associated with Aboriginal and Torres Strait Islander health.

BushTV Enterprises is an Aboriginal-owned community agency specialising in grassroots advocacy and producing and distributing Aboriginal and Torres Strait Islander stories.

Visit: <https://bushtv.com.au/portfolio/mens-health-is-mens-business/>

ENDS





Pic caption:

**Camping on Country:** Some of the participants of the program gather on the Beedawong Meeting Place in Kings Park at the announcement of the \$1 million funding – Elder Alan Egan, second from left, Ernie Dingo, Nyoongar man Dr Richard Walley OAM, Elder Ted Carlton, Minister Ken Wyatt AM right, and Aboriginal health workers.



## FOODS YOU SHOULD EAT EVERYDAY

Prevents Cancer



AVOCADO

Promotes  
Healthy Heart



GINGER

Strengthens Digestion



PEPPER

Prevents Constipation



SPINACH

Aids in Weightloss



CUCUMBER

Good For Eyes



TOMATO

Maintains  
Blood Pressure



GARLIC

Boosts  
Immune System



GRAPEFRUIT

## Good Food Combinations



Tomatoes are rich in **lycopene**, a pigment-rich antioxidant known as a carotenoid, which reduces cancer risk and cardiovascular disease. Fats like avocado make carotenoids more bioavailable.



The organic compounds in both foods, called **phenols**, stabilize your LDL cholesterol (low-density lipoprotein, or so-called "bad" cholesterol) when consumed together.



New research shows that this combo prevents prostate cancer, but no one is sure why.



Studies have shown that the antioxidant effects of consuming a combination of fruits are more than additive but **synergistic**.



Vitamin C helps make plant-based iron more absorbable



Adding black pepper to turmeric or turmeric-spiced food enhances curcumin's bioavailability by **1,000 times**



## **Notice of Proposed Disposition of Property**

(Section 3.58, Local Government Act 1995)

Notice is hereby given that the Shire of Wiluna proposes to dispose of approximately 2,007m<sup>2</sup> of light-industrial zoned land and buildings as depicted below being Lot 1506 on DP192681 (24 Woodley Street, Wiluna) to Riloch Pty Ltd (ABN 61 152 888 803) by way of a lease.

It is intended that the lease will have an initial term expiring on 01 November 2020 with two rights of renewal (at lessee's option):

from 02 November 2020 to 01 November 2023, and  
from 02 November 2023 to 01 November 2026.

Other details on the proposed lease are as follows:

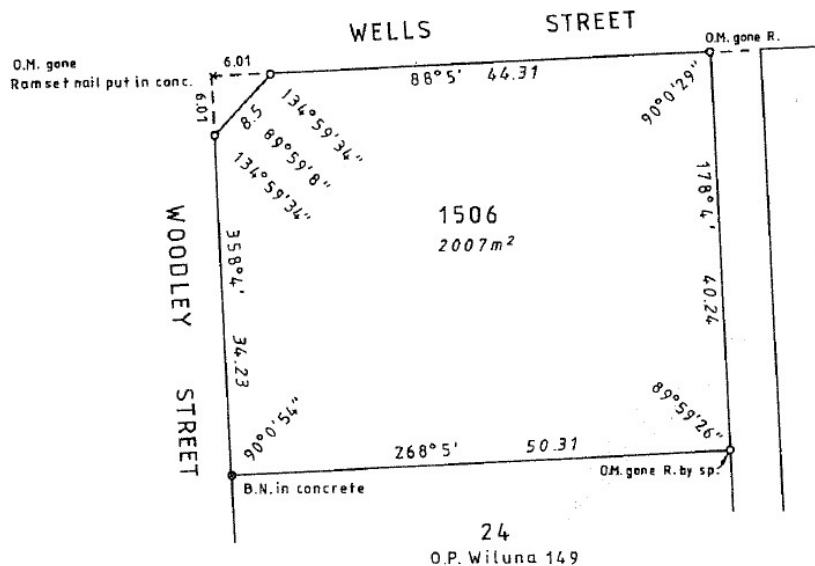
The purpose of the lease will be the establishment of a multi-agency business including:

- TOLL Ipec Goods Inwards and Outwards
- Freight management and storage
- Tyre fitting and supply
- Kleen-heat gas supply and storage
- Hardware supplies
- Nursery and garden supplies
- Warehousing

The lessee will be responsible for the cost outgoings on the property, cost of fit-out, and obtaining all required approvals.

The initial rent will be set at \$4,160 per year and will be adjusted annually by the CPI.

A management valuation has estimated the value of the disposition as \$28,500.



Written submissions are invited in relation to the proposed disposition. Such submissions should be:

Sent by mail to the Shire of Wiluna, PO Box 38. WILUNA WA 6646; or  
Hand-delivered to the Shire Administration Office at 70 Wotton Street, Wiluna; or  
Sent by email to [dceo@wiluna.wa.gov.au](mailto:dceo@wiluna.wa.gov.au)

**Submissions must be received by 4.00pm on Friday 8<sup>th</sup> February 2019.**

# A Big Thank You

**From Kavea & Isea Dakunimata**

On the 6<sup>th</sup> of December 2018 we had the opportunity to offer assistance to children that are less fortunate in Cambodia through an organisation called International Children's Care (ICC). This organisation has established a little community called Light of Hope (LOH) located in the Kampong Thom Province which has a school that caters for Kindergarten to year 12, a community church and it also provides a safe haven and comfort for a group of 65 orphaned children. LOH also provides education to various local villages nearby. The purpose of our trip is as follows:

- Replace existing termite infected wooden walls with bricks and timber supporting beams/ posts with steel to the community church
- Paint 5 x class rooms
- Build 2 x timber decking under trees for children to enjoy their breaks

To be able to achieve the above goals, we needed to contribute financially for the purchase of materials. Hence we decided to raise funds locally in Wiluna by selling cupcakes, soft drinks and sausage sizzles. We were truly blessed and also grateful for the support from the local Wiluna community in coming out in numbers and contributing to cause. We spent numerous Sundays from late July to early November 2018 raising funds to contribute to the project materials, buy new blankets and bath towels for 65 children. Apart from working all day, we also thoroughly enjoyed our time with the LOH children through laughters, social activities, songs and story telling. Leaving LOH was emotionally tough, as we had bonded with the children and staff. We can safely say that this trip was highly successful. This trip was an eye opener to us in reference to the hardships and struggles faced by many unfortunate children in Cambodia and it is such a blessing to be able to represent Wiluna in being able to provide a helping hand. We have so much more photos and experience to share but our space is limited.

We want to thank each and everyone in Wiluna for helping us achieve this project. We wish you all a prosperous and a safe new year. May God bless you all.

From your friends at the Wiluna Seventh Day Adventist Church.

P.S We maybe planning to go again at the end of this year ☺







Walls going up at the orphanage





The completed classroom



Painting of the classrooms











Building decking under the trees



Children receiving donated quilts and bath towels





Route: Perth (PER)- Mount Magnet (MMG)- Meekatharra (MKR)-Wiluna (WUN)- Perth (PER)														
MONDAY					TUESDAY					WEDNESDAY				
FLT	DEP	FROM	TO	ARR	FLT	DEP	FROM	TO	ARR	FLT	DEP	FROM	TO	ARR
HK1935	0735	PER	WUN	0935						HK1935	0735	PER	WUN	0920
	1005	WUN	MKR	1045							0950	WUN	MKR	1020
	1130	MKR	MMG	1210							1105	MKR	MMG	1140
	1240	MMG	PER	1400							1210	MMG	PER	1330
THURSDAY					FRIDAY					SATURDAY				
FLT	DEP	FROM	TO	ARR	FLT	DEP	FROM	TO	ARR	FLT	DEP	FROM	TO	ARR
					HK1935	1100	PER	WUN	1300					
						1330	WUN	MKR	1410					
						1455	MKR	MMG	1535					
						1605	MMG	PER	1725					
										SUNDAY				

Skippers Aviation is proudly WA owned and operated and committed to supporting regional WA. Skippers will continue to offer local residents a discounted fare for all regional communities within it's network.

These Fares provide substantial discounts from the standard fare, but come subject to conditions:

- Locals must provide proof of residency
- Bookings must be made at least 60 days in advance of the travel dates
- Fares are NON-refundable
- No destination changes are permitted
- Name changes are not permitted
- No itinerary changes are permitted
- Fare is forfeited if the passenger fails to complete check in before the flight closure time (ie 30minutes prior to the scheduled departure time)
- Children, Infants and unaccompanied minors Children between 2 and 12 years old need to be booked as a child

As with all fares, bookings are subject to seat availability on the desired flight (s)

Skippers advises that these fares must be booked with "Central Reservations" on 1300 729 924 or Email: [reservations@skippers.com.au](mailto:reservations@skippers.com.au).

If these fares don't suit (many of us don't have a 60 day planning horizon), try calling Jacki on 0438 565 065 to see what kind of deal you can get.....

## SUDOKU PUZZLES—3 LEVELS

	5		7				9	
1				3				
9				8		6		
	9					7		
			8			2		
	6	5	1					
3		9	6	1			8	4
		2	5		4		7	6

**Easy—answers on next page**

		2						3
	9					1		
			8					
			5		1			
4	6			7				
		7				6	1	
6							8	5
7			2	3	8			
			4			9		

**Medium**

**Hard**

	4			1		8		
			4					
	3	6		7				
1								
			6		9	4		5
			8	2			6	
	7	8				5		
				4			3	
3					5	9		

## SUDOKU ANSWERS

6	5	4	7	2	1	8	9	3
1	8	7	9	3	6	4	5	2
9	2	3	4	8	5	6	1	7
4	9	8	2	5	3	7	6	1
7	3	1	8	6	9	2	4	5
2	6	5	1	4	7	9	3	8
5	4	6	3	7	8	1	2	9
3	7	9	6	1	2	5	8	4
8	1	2	5	9	4	3	7	6

**Easy**

1	7	2	6	4	5	8	9	3
8	9	5	7	2	3	1	4	6
3	4	6	8	1	9	5	7	2
9	8	3	5	6	1	7	2	4
4	6	1	9	7	2	3	5	8
5	2	7	3	8	4	6	1	9
6	3	4	1	9	7	2	8	5
7	5	9	2	3	8	4	6	1
2	1	8	4	5	6	9	3	7

**Medium**

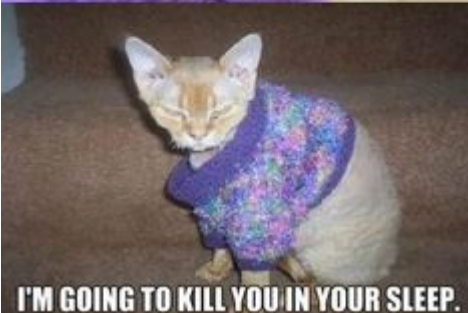
**Hard**

5	4	2	3	1	6	8	9	7
7	8	1	4	9	2	6	5	3
9	3	6	5	7	8	1	2	4
1	6	9	7	5	4	3	8	2
8	2	7	6	3	9	4	1	5
4	5	3	8	2	1	7	6	9
2	7	8	9	6	3	5	4	1
6	9	5	1	4	7	2	3	8
3	1	4	2	8	5	9	7	6



# Laughter

MY OWNER LOVES ME SO MUCH, I GET A SWEATER TO KEEP ME WARM



I'M GOING TO KILL YOU IN YOUR SLEEP.



YOU THINK THIS IS FUNNY?

just wait till i get out of this thing.  
we'll see who's laughing then



more awesome pictures at [THEMETAPICTURE.COM](http://THEMETAPICTURE.COM)

I'VE GOT MY THINKING CAT ON



You may think you're cool, but you'll never be a cat riding a dog wearing sunglasses cool.

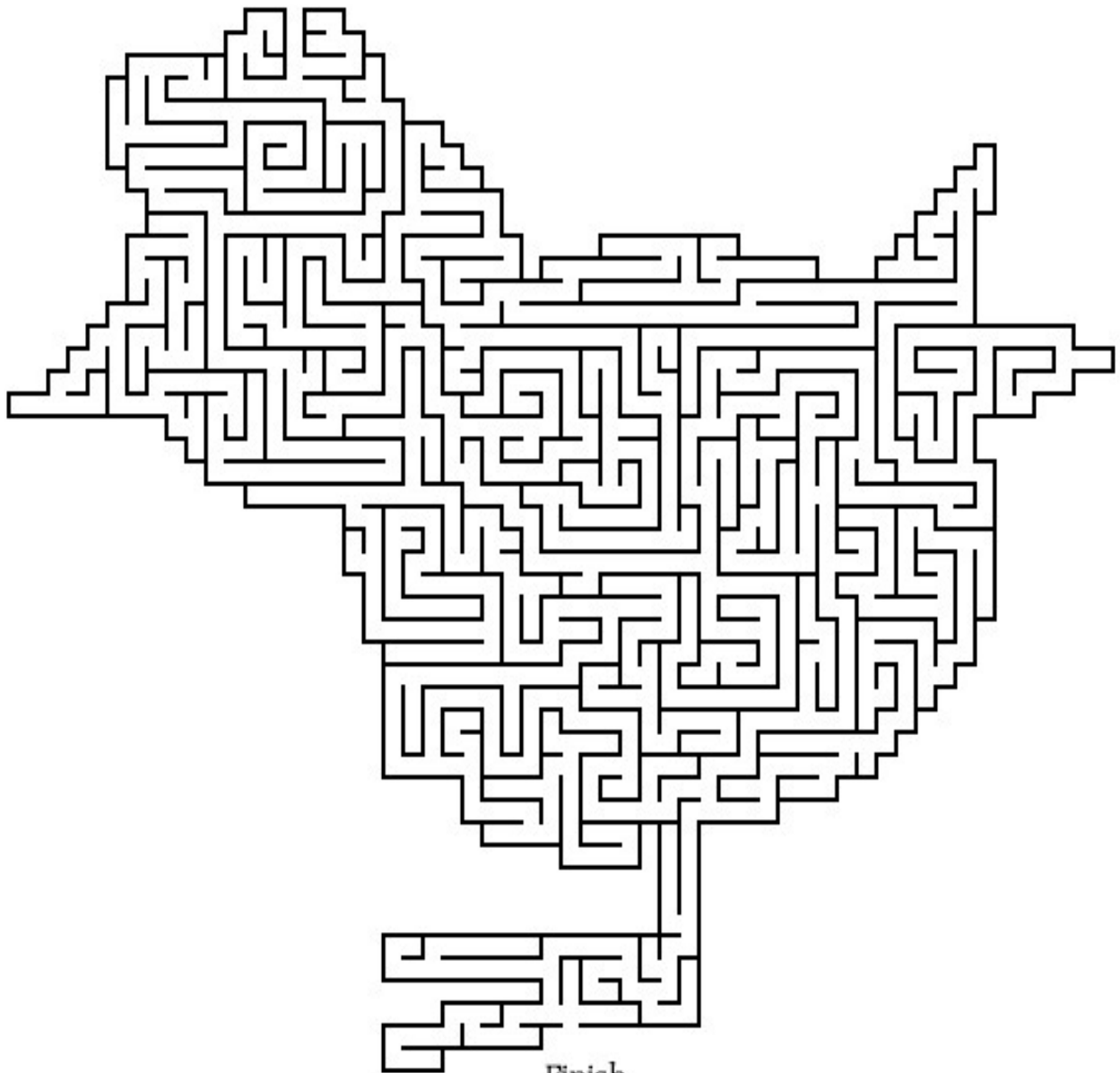




# BIRD MAZE

draw a line from start to finish by  
finding the open path

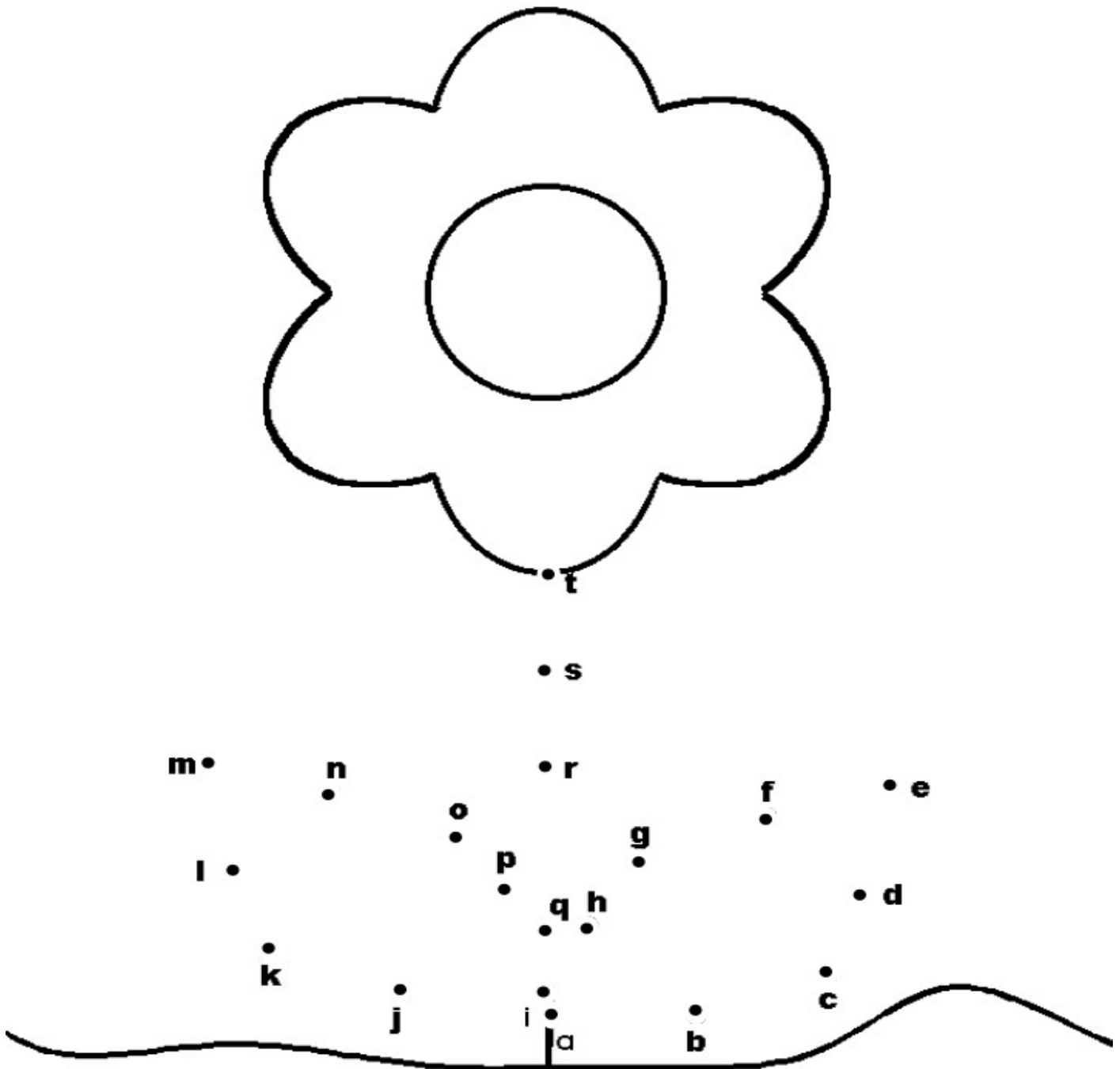
Start



Finish

## Kid's Pages

**Join the dots from a through to find a flower to colour**







## **Wiluna Buy and Sell**

Do you have anything you want to buy or sell?  
You can advertise here for free.  
Forget Gumtree and Ebay, and all those freight charges.  
One mans' trash is another mans' treasure.  
Let's keep it local and we all benefit.

**Super Garage Sale**  
**Sunday 27 January 2019 10am**  
**Plenty of bargains**  
**Clothing/kitchenware/bedding**  
**and much more**  
**Old shed behind Wiluna Cafe**  
**Katrina & Graham's place Wotton St**



If you would like to advertise something please email the Shire on [aa@wiluna.wa.gov.au](mailto:aa@wiluna.wa.gov.au) with Wiluna Buy & Sell in the subject line. Please include a picture if you can and a detailed description. Please include your contact details.